

INSTALLATION INSTRUCTIONS

Remodel Housing - 3000, 4000 and 5000 Series - Shallow housing

DO NOT INSTALL IN INSULATION - SUITABLE FOR DAMP LOCATION

IT3000CE - IT3000CE2 - IT3000CM - IT3000CM2 - IT3000CM3 - IT4000CE
IT4000CE2 - IT4000CM - IT5000CE - IT5000CE2 - IT5000CM

WARNING - FIRE HAZARD

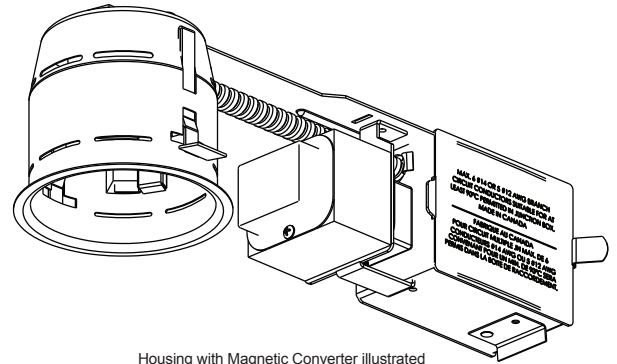
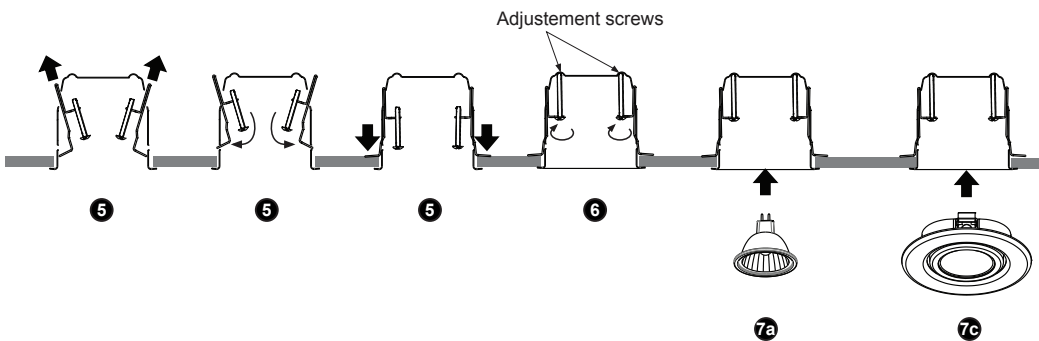
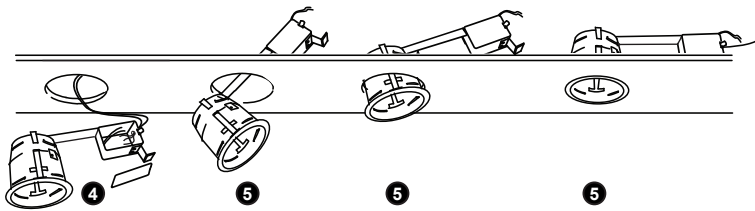
Only magnetic low voltage dimmers are approved for use with MR16 and LED MR16 lamps in Contrast lighting products with a magnetic transformer.

The use of any other dimmer may cause a fire.

1. SHUT OFF ELECTRICAL SUPPLY AT SOURCE.

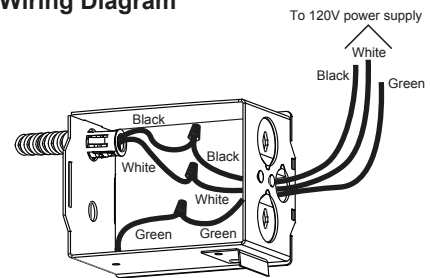
- Bring the electrical wiring in the ceiling respecting all the local electrical codes.
- Cut a hole of:
 - 3000 Series:** Ø 3-5/8" (92 mm) in the ceiling
 - 4000 Series:** Ø 3-1/4" (83 mm) in the ceiling
 - 5000 Series:** Ø 2-5/8" (67 mm) in the ceiling
- Remove the junction box cover by pushing on the clip. Remove the appropriate knock-out(s) to accommodate your wiring. Connect the wires coming from the supply to the box wires, and match the colors together (White/White, Black/Black, Green/Green, see **Wiring Diagram**). Fix the junction box cover back in place
- Push the fastening hooks inside the housing through the lateral opening. Slide the housing into position. Push the fastening hooks through the lateral openings.
- Fasten the fixture with the adjustment screws.
- Insert: a) the lamp
b) the UV lens*
c) the trim

***Use supplied glass lens only with unprotected MR16 lamps.**



Housing with Magnetic Converter illustrated

Wiring Diagram



For dimming requirements, refer to the dimmer manufacturer's specifications. MR16 GU5.3 and MR11 GU4 lamp base configuration may vary between manufacturers resulting in various lengths of pins. DO NOT OVER PUSH AT INSTALLATION.

Please keep these instructions for maintenance reference.



WARNING

The use of other company's (non-Contrast) products or components (e.g. trims) in conjunction with Contrast products may not be covered by UL approvals, and could be hazardous. Such use automatically voids all Contrast warranty and responsibility from any problems that may result from such use.



WARNING

SHOCK AND FIRE HAZARD

Most dwellings built before 1985 have supply wires rated 60°C. Consult a qualified electrician before installing.



It is very important not to exceed the lamp wattage indicated.



CONTRAST
LIGHTING

CONTRAST LIGHTING M. L. INC.
1009 RUE DU PARC-INDUSTRIEL
LÉVIS QC G6Z 1C5
CANADA

Tel: 1-888-839-4624
Fax: 1-877-839-7057
info@contrastlighting.com
www.contrastlighting.com

© 2015 Contrast Lighting M.L. Inc.
All rights reserved
EC400 (Rev. C) - 100521
2015-03

PRINTED IN CANADA