

# INSTALLATION INSTRUCTIONS

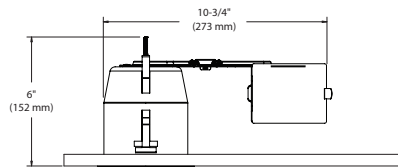
## Remodel Housing 2000 serie, 3000 serie

Do Not Install In Insulation

CA2000U - CA2550U - CA3600U

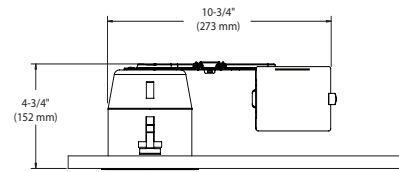
### CA2000U - CA2550U Model

A 6" minimum clearance inside the ceiling is required to ensure proper housing installation.

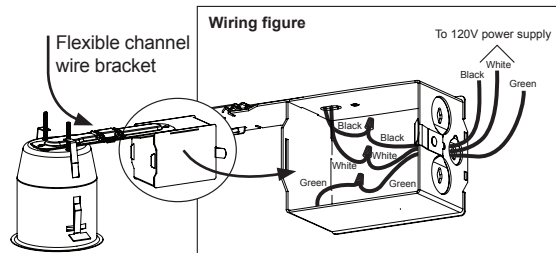


### CA3600U Model

A 4-3/4" minimum clearance inside the ceiling is required to ensure proper housing installation.

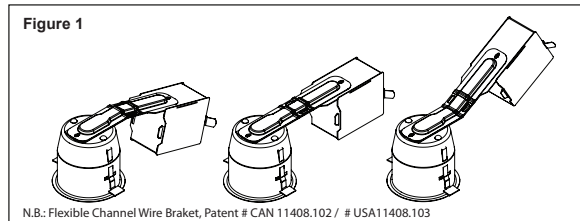


1. SHUT OFF ELECTRICAL SUPPLY AT SOURCE.
2. Bring the electrical wiring in the ceiling respecting local electrical codes.
3. Cut a hole in the ceiling: **2000 series: Ø 4-1/4" (108 mm)**  
**3000 series: Ø 3-5/8" (92 mm)**
4. Remove the junction box cover by pushing on the spring latch. Remove the appropriate knockout(s) to accommodate your wiring. Connect the wires coming from the power supply to the junction box wires, and match colors together (White/White, Black/Black, Green/Green, see **Wiring figure**). Close the junction box.



**IMPORTANT:** Leave an extra length of 6" of supply leads and ground wire inside the junction box.

5. Push the fastening hooks inside the housing through the lateral opening. Slide the housing into position. Flexible channel wire bracket bends up to 45° MAX for ease of installation in a confined space (see **figure 1**).
6. Push fastening hooks outside the housing through the lateral openings.
7. Fasten the housing with the adjustment screws.

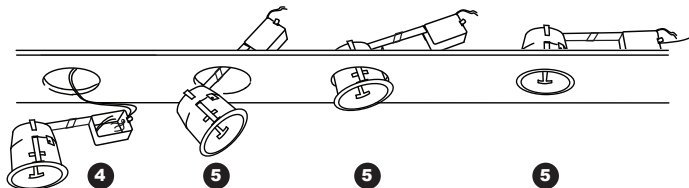


### 8. For Adjustable PAR20

- a) Insert the lamp into the socket.
- b) Insert the lamp into the trim and insert the trim into the housing.

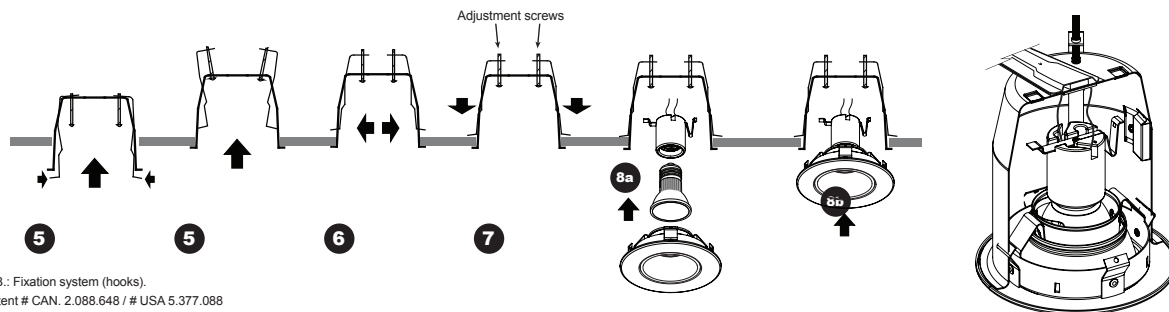
### For Downlight PAR20

- a) Attach the socket by inserting the socket clip at the bottom of the housing. Make sure that there are no wires between the socket and the housing.
- b) Insert the lamp into the socket.
- c) Insert the trim into the housing.



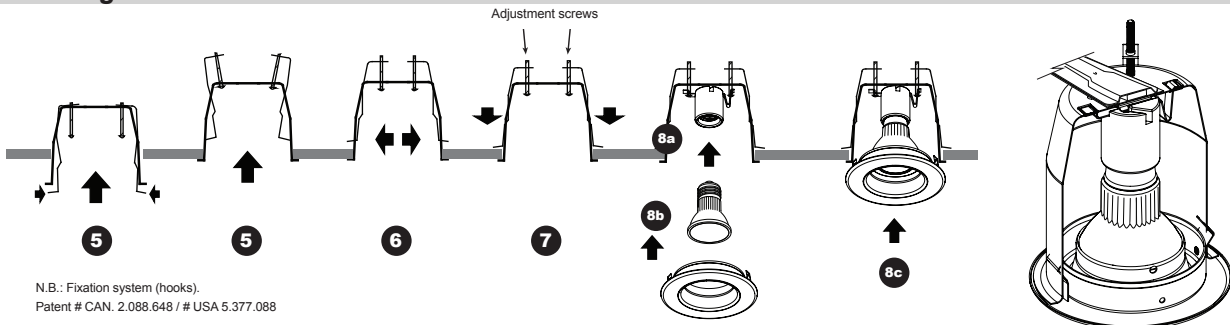
Please keep these instructions for maintenance reference.

## Adjustable PAR20



N.B.: Fixation system (hooks).  
Patent # CAN. 2.088.648 / # USA 5.377.088

## Downlight PAR20



N.B.: Fixation system (hooks).  
Patent # CAN. 2.088.648 / # USA 5.377.088



### WARNING

The use of other company's (non-Contrast) products or components (e.g. trims) in conjunction with Contrast products may not be covered by UL approvals, and could be hazardous. Such use automatically voids all Contrast warranty and responsibility from any problems that may result from such use.



### WARNING

**SHOCK AND FIRE HAZARD**  
Most dwellings built before 1985 have supply wires rated 60°C. Consult a qualified electrician before installing.  
**Do not exceed the indicated lamp wattage.**

**WARRANTY: CONTRAST LIGHTING M. L. INC.** guarantees the components against manufacturing defects for a period of one (1) year, under normal use with proof of purchase. The obligation of the manufacturer consists in the cost of the components and does not cover the cost of labor and transport for replacement. For all claims, please contact your local supplier. See our Web site for additional warranty details.

# CONTRASTE

1009, rue du Parc Industriel  
Lévis (Québec) G6Z 1C5 Canada  
Tel.: 1-888-839-4624  
Fax: 1-877-839-7057  
contrastlighting.com  
info@contrastlighting.com

© 2016 Contrast Lighting M.L. Inc.  
All rights reserved

EC654  
103945