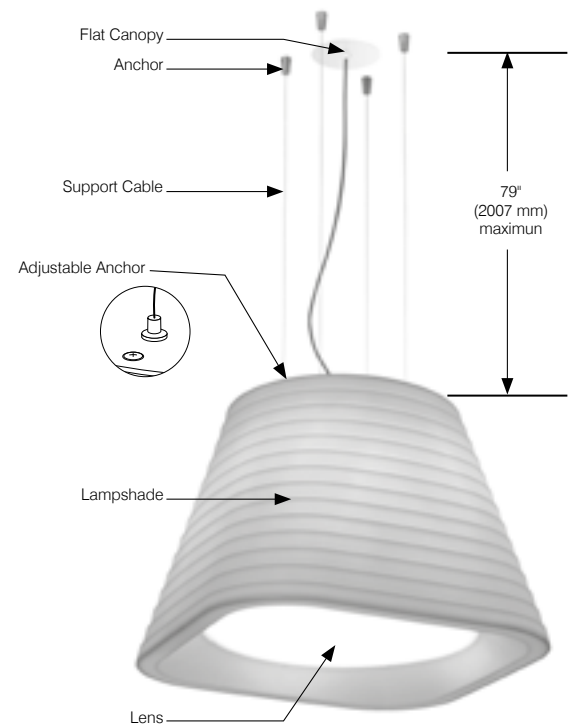
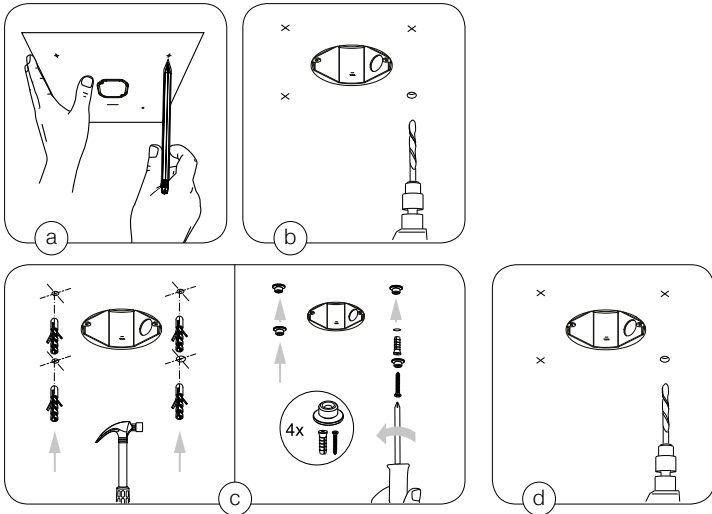


# Brigit

## Brigit Suspension System

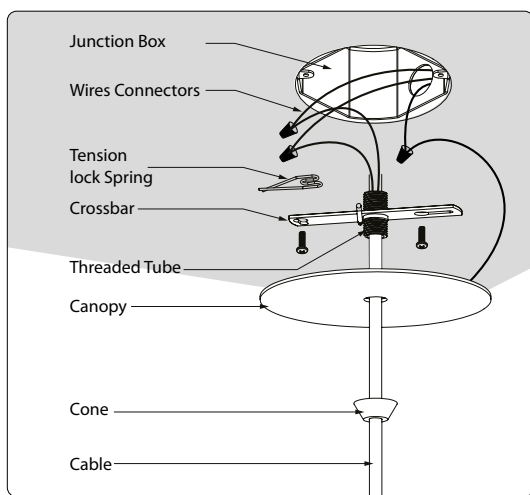
1. SHUT OFF THE ELECTRICAL SUPPLY AT SOURCE
2. ANCHOR INSTALLATION ON CEILING

- a) Align and mark anchor holes using drilling template included to center the junction box properly.
- b) Drill holes using template.
- c) Install anchor using included hardware.
- d) Install support cables on anchor fixed to ceiling.



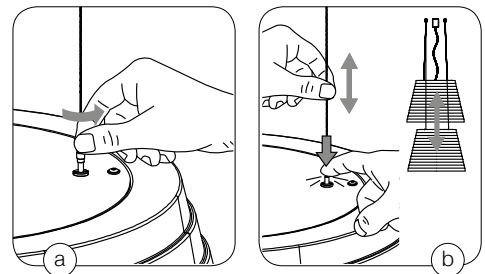
### 3. ELECTRICAL CONNECTIONS

- a) Bring the electrical supply wires to the junction box, according to local electrical code.
- b) Screw the cross bar on the junction box.
- c) Make the electrical connections respecting the color of the wires:  
 ELV: Black/Brown, White/Blue and Green/Green.  
 0-10V: Black/Brown, White/Blue, Green/Green, Purple/Purple and Grey/Grey.
- d) Adjust the cable length with the tension lock spring and secure with a knot to stop the cable.
- e) Bring the flat canopy to the ceiling.
- f) Screw the threaded tube with the cone until the flat canopy is held firmly flush to the ceiling.



### 4. SHADE INSTALLATION

- a) Unscrew the four adjustable anchors on the top of the lampshade.
- b) Adjust height by pushing on the anchor to release tension. Screw anchors to lock in place.



Please keep these instructions for future reference.

**WARNING**  
 The use of other company's (non-Contraste) products or components (e. g. trims) in conjunction with Contrast Lighting M.L. Inc. products may not be covered by UL approvals and could be hazardous. Such use automatically voids all Contrast Lighting M.L. Inc. warranty and responsibility of these products.

**WARNING: RISK OF FIRE**  
 Most dwellings built before 1985 have supply wires rated 60° C. Consult a qualified electrician before installing.  
**It is very important not to exceed the lamp's indicated wattage.**

**WARRANTY:** CONTRAST LIGHTING M. L. INC. guarantees the components against manufacturing defects for a period of one (1) year, under normal use with proof of purchase. The obligation of the manufacturer consists in the cost of the components and does not cover the cost of labor and transport for replacement. For all claims, please contact your local supplier. See our Web site for additional warranty details.

