

Spin and Spinr

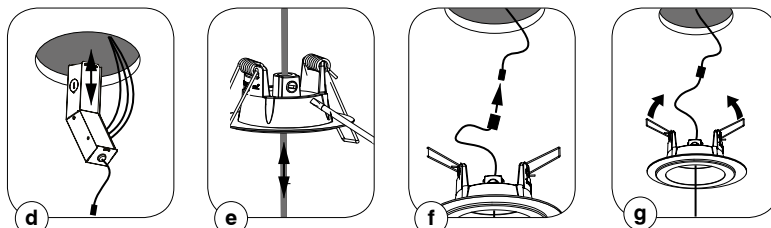
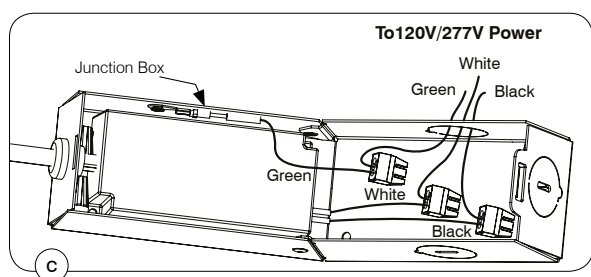
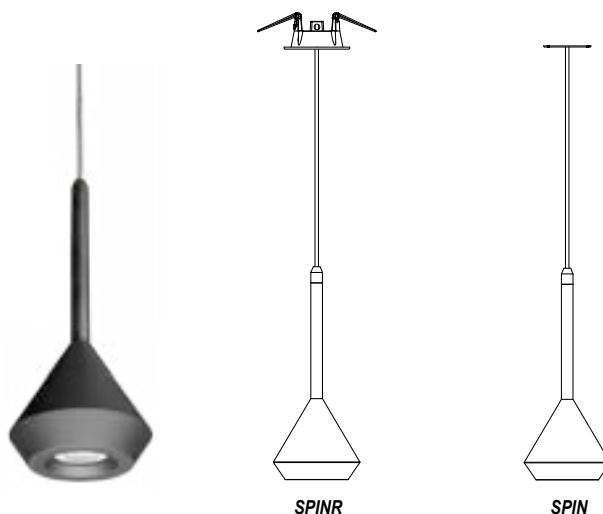
Suspension System

SPIN-B-30, SPIN-W-30, SPINR-B-30, SPINR-W-30

ARKOSLIGHT BY/PAR CONTRASTE

Section 1: SPINR Installation Instructions

1. SHUT OFF THE ELECTRICAL SUPPLY AT SOURCE
2. INSTALLATION OF THE LUMINAIRE TO THE CEILING
 - a) Cut the hole: \varnothing 2-5/8" (66 mm)
 - b) Bring the electrical supply wires to the junction box included with the product, according to local electrical code.
 - c) Make the electrical connections by respecting the color of the wires: Black/Black, White/White et Green/Green.
 - d) Insert the junction box in the ceiling. Leave the electrical connector outside the ceiling.
 - e) Adjust the cable length with the adjustment screw on the base trim.
 - f) Plug the male and female connectors.
 - g) Insert the canopy in the ceiling hole.



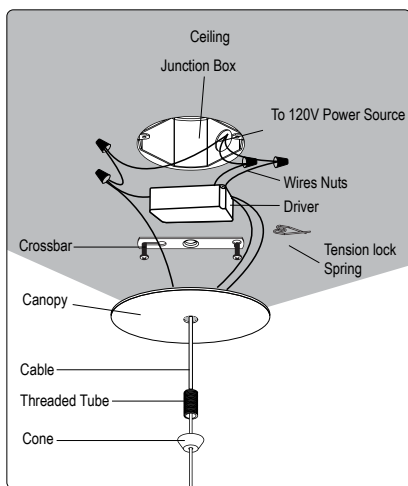
Section 2: SPIN Installation Instructions

BEFORE STARTING: Check if the short threaded tube that is pre-assembled on the cone is long enough to be installed on the crossbar that will be mounted on the junction box (sold separately). Otherwise, replace the short tube by the long tube before you start.

Check if your junction box has enough space to insert the driver. If not use the junction box extension included with the canopy.

1. SHUT OFF THE ELECTRICAL SUPPLY AT SOURCE.
2. ELECTRICAL CONNECTION

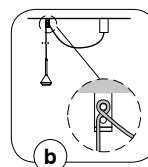
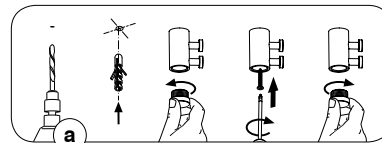
- a) Bring the electrical supply wires to the junction box, according to local electrical code.
- b) Screw the cross bar on the junction box.
- c) Make the electrical connections by respecting the color of the wires: Black/Black, White/White and Green/Green
- d) Adjust the cable length with the tension lock spring and secure with a knot to stop the cable.
- e) Bring the canopy to the ceiling.
- f) Secure by screwing the threaded tube with the cone until the canopy rests tight against the ceiling.



Accessory

1. HOOK CABLE INSTALLATION

- a) Drill hole in the ceiling. Remove the cap on the anchor. Screw the hook in the ceiling. Screw the cap on the hook.
- b) Adjust the height of the lampshade by crossing the cable in the hook.



Please keep these instructions for future reference.



WARNING

The use of other company's (non-Contraste) products or components (e. g. trims) in conjunction with Contraste Lighting M.L. Inc. products may not be covered by UL approvals and could be hazardous. Such use automatically voids all Contrast Lighting M.L. Inc. warranty and responsibility of these products.



WARNING: RISK OF FIRE

Most dwellings built before 1985 have supply wires rated 60° C. Consult a qualified electrician before installing.



It is very important not to exceed the lamp's indicated wattage.

WARRANTY: CONTRAST LIGHTING M. L. INC. guarantees the components against manufacturing defects for a period of one (1) year, under normal use with proof of purchase. The obligation of the manufacturer consists in the cost of the components and does not cover the cost of labor and transport for replacement. For all claims, please contact your local supplier. See our Web site for additional warranty details.

CONTRASTE

1009, rue du Parc Industriel
Lévis (Québec) G6Z 1C5 Canada

Tel.: 1-888-839-4624
Fax.: 1-877-839-7057

contrastlighting.com
info@contrastlighting.com

© 2017 Contrast Lighting M.L. Inc.
All rights reserved

EC676
104083

Contrast Lighting M.L. Inc. reserves the right to make changes in specifications and/or to discontinue any product at any time without notice or obligation and will not be liable for any consequences resulting from the use of this publication.