

Drop

LED Recessed Downlight

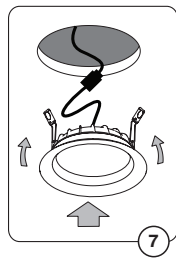
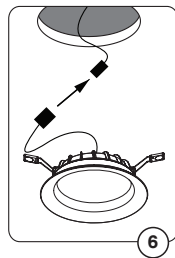
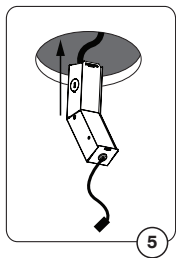
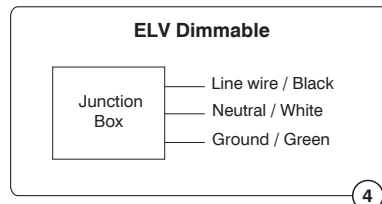
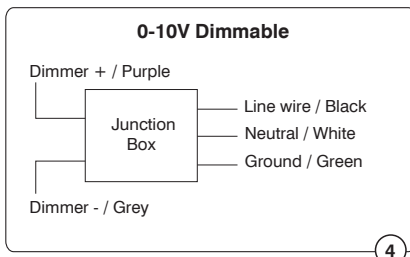
ARKOSLIGHT BY/PAR CONTRASTE

NOTE

Require a 4" (100 mm) minimum clearance inside the ceiling to ensure proper installation.



1. **SHUT OFF THE ELECTRICAL SUPPLY AT SOURCE**
 2. Bring the electrical wiring in the ceiling respecting local electrical codes.
 3. Cut a \varnothing 9-5/8" (245 mm) hole in the ceiling.
 4. Remove the junction box cover by pushing on the clip. Remove the appropriate knock-out(s) to accommodate your wiring. Connect the wires coming from the power supply to the junction box wires, and match the colors together (White/White, Black/Black, Green/Green).
 5. Insert the junction box in the ceiling leaving the connector accessible.
 6. Connect the fixture to the junction box with the quick-connect push-in terminals.
 7. Push spring-loaded clips on the fixture upwards and insert fixture base in the mounting hole. Release the clips and fixture will be pulled flush to the ceiling
- Note:** Can fit ceilings up to 2" (50 mm) thick.



Please keep these instructions for future reference.



WARNING

The use of other company's (non-Contraste) products or components (e. g. trims) in conjunction with Contraste Lighting M.L. Inc. products may not be covered by UL approvals and could be hazardous. Such use automatically voids all Contrast Lighting M.L. Inc. warranty and responsibility of these products.



WARNING: RISK OF FIRE

Most dwellings built before 1985 have supply wires rated 60° C. Consult a qualified electrician before installing.



It is very important not to exceed the lamp's indicated wattage.



CONTRASTE