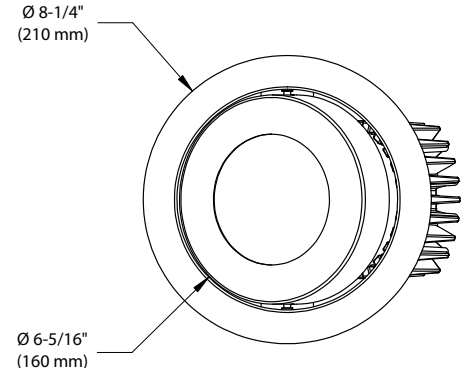
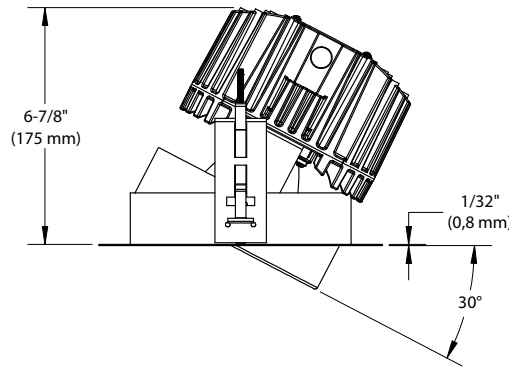


HexaLED

6" Series

Adjustable lockable HexaLED

Project
Notes
Fixture Type
Date



DESCRIPTION

Contrast combined advanced technology LED components to create a new and powerful unit that will meet every specification project needs. Stop looking for the ideal LED recessed luminaire for your projects. Our new HexaLED will deliver the exact lumen output to meet the desired lighting performance that is suitable for a wide variety of architectural applications including retail stores, restaurants, hotels, office spaces, museums and art galleries, public areas and other interiors.

SPECIFICATIONS

COLOR TEMPERATURE	3,000K, 3,500K and 4,000K		
LED MODULE	CREE CXA2530 LED providing binning freedom with single 4 step MacAdam ellipse color performance control. ANSI binning requirements		
LUMEN OUTPUT	1,700 lumens to 3,100 lumens with 80+ CRI 60 to 85 lumens/watt		
	22W	30W	40W
3,000K	1,700 lms	2,220 lms	2,700 lms
3,500K	1,850 lms	2,400 lms	2,900 lms
4,000K	1,950 lms	2,550 lms	3,100 lms
CRI	80 + standard 90 + available with 3,000K		
TRIM	Plated die-formed steel, with powder coating, marine grade option available. Adjustable center is lockable.		

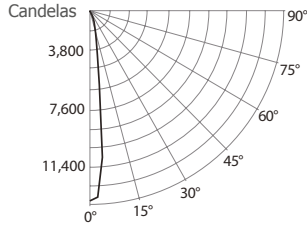
BEAM	15°, 21° and 46°, adjustable and lockable
LENS	Clear glass lens
HEAT SINK	Very high quality injected aluminum ensuring maximum heat dissipation
LIFESPAN	L ₇₀ @ 50,000 hours
HOUSING	Can be used with 6" Contrast remodel and new construction housing Ex.: REHEXxxxx (Remodel) NWXHEXxxxx (New Construction)
WARRANTY	5 year warranty on LED module and driver
CERTIFICATION	<ul style="list-style-type: none"> cULus E343977 for damp locations Energy Star: see ordering codes for certified configurations



HexaLED 6" Series

3,000K, Power 1, Spot Beam

CANDLEPOWER DISTRIBUTION



CONE OF LIGHT

Distance	FC	DIA
06'	435.0	1.6
08'	244.7	2.1
10'	156.6	2.7
12'	108.8	3.2
14'	79.9	3.7
16'	61.2	4.2
18'	48.3	4.8
20'	39.2	5.3

Beam: 15°
Beam Edge defined as 50% of Maximum Nadir Candle-power.

LUMINAIRE

Power 1 HexaLED	3,000K Spot Beam
Equivalent Bulbs	20W HID / 2X13W TTT
CBCP / Lumens	15,660 / 1,719
Watts	120V 277V 23.5W 23.5W
Operating AMPS	0.19A
Lumen Maintenance	L70 @ 50,000 Hrs
CRI	80 +
Lumens/Watt	73.1
Spacing Criteria	0.24
Certificate LM79-08	00025
Base on luminaire efficiency 85%	

COEFFICIENT OF UTILIZATION - %

Ceiling Reflect %	80	50	30
Wall Reflect %	50 30 50 30 50 30		
RCR	0 119 119 111 111 106 106		
	2 108 105 104 102 101 99		
	4 100 97 97 95 96 93		
	6 94 90 92 89 91 88		
	8 89 85 88 85 87 84		
	10 85 81 84 81 83 80		

Zonal Cavity Method Effective Floor
Cavity Reflectance 20%

ZONAL LUMEN SUMMARY

ZONE	LUMENS	%LUMINAIRE
0-30	1,666	97%
0-40	1,704	99%
0-60	1,715	99%
60-90	5.3	0.3%
0-90	1,719	100%

MULTIPLE UNIT DATA - (RCR 2)

SPACING ON CENTER	INITIAL FOOTCANDLES	WATTS/ SQ. FT.
5'	82	1.04
6'	46	0.59
7'	32	0.41
8'	32	0.41
9'	21	0.26

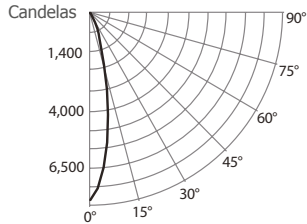
38' X 38' X 10' Room. Workplane 2-1/2" above floor.
80/50/20% Reflectances

CANDELA DISTRIBUTION

DEGREES VERTICAL	CANDELA	DEGREES VERTICAL	CANDELA
0	15,660	45	9
5	12,138	55	2
10	3,727	65	3
15	1,892	75	2
20	1,142	85	2
25	735	90	0
35	44		

3,000K, Power 1, Medium Beam

CANDLEPOWER DISTRIBUTION



CONE OF LIGHT

Distance	FC	DIA
06'	220.3	2.3
08'	123.9	3.1
10'	79.3	3.9
12'	55.1	4.7
14'	40.5	5.4
16'	31.0	6.2
18'	24.5	7.0
20'	19.8	7.8

Beam: 22°
Beam Edge defined as 50% of Maximum Nadir Candle-power.

LUMINAIRE

Power 1 HexaLED	3,000K Medium Beam
Equivalent Bulbs	20W HID / 2X13W TTT
CBCP / Lumens	7,930 / 1,584
Watts	120V 277V 23.5W 23.5W
Operating AMPS	0.19A
Lumen Maintenance	L70 @ 50,000 Hrs
CRI	80 +
Lumens/Watt	67.4
Spacing Criteria	0.37
Certificate LM79-08	00026
Base on luminaire efficiency 85%	

COEFFICIENT OF UTILIZATION - %

Ceiling Reflect %	80	50	30
Wall Reflect %	50 30 50 30 50 30		
RCR	0 119 119 111 111 106 106		
	2 108 105 103 101 100 98		
	4 99 95 96 93 94 91		
	6 92 88 90 86 89 86		
	8 86 82 85 81 84 81		
	10 81 77 80 77 79 76		

Zonal Cavity Method Effective Floor
Cavity Reflectance 20%

ZONAL LUMEN SUMMARY

ZONE	LUMENS	%LUMINAIRE
0-30	1,525	96.3%
0-40	1,570	99.1%
0-60	1,581	99.8%
60-90	2.7	0.2%
0-90	1,584	100%

MULTIPLE UNIT DATA - (RCR 2)

SPACING ON CENTER	INITIAL FOOTCANDLES	WATTS/ SQ. FT.
5'	75	1.04
6'	42	0.59
7'	29	0.41
8'	29	0.41
9'	19	0.26

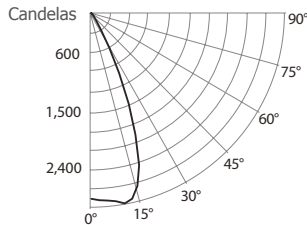
38' X 38' X 10' Room. Workplane 2-1/2" above floor.
80/50/20% Reflectances

CANDELA DISTRIBUTION

DEGREES VERTICAL	CANDELA	DEGREES VERTICAL	CANDELA
0	7,930	45	11
5	6,587	55	3
10	4,392	65	1
15	2,273	75	1
20	1,176	85	0
25	743	90	0
35	54		

3,000K, Power 1, Wide Beam

CANDLEPOWER DISTRIBUTION



CONE OF LIGHT

Distance	FC	DIA
06'	82.4	5.1
08'	46.3	6.8
10'	29.7	8.5
12'	20.6	10.1
14'	15.1	11.8
16'	11.6	13.5
18'	9.2	15.2
20'	7.4	16.9

Beam: 46°
Beam Edge defined as 50% of Maximum Nadir Candle-power.

LUMINAIRE

Power 1 HexaLED	3,000K Wide Beam
Equivalent Bulbs	20W HID / 2X13W TTT
CBCP / Lumens	2,965 / 1,645
Watts	120V 277V 23.5W 23.5W
Operating AMPS	0.19A
Lumen Maintenance	L70 @ 50,000 Hrs
CRI	80 +
Lumens/Watt	70
Spacing Criteria	0.67
Certificate LM79-08	00027
Base on luminaire efficiency 85%	

COEFFICIENT OF UTILIZATION - %

Ceiling Reflect %	80	50	30
Wall Reflect %	50 30 50 30 50 30		
RCR	0 119 119 111 111 106 106		
	2 106 103 101 99 98 96		
	4 96 91 92 89 91 88		
	6 87 82 85 81 84 80		
	8 80 75 78 74 77 74		
	10 74 69 72 68 72 68		

Zonal Cavity Method Effective Floor
Cavity Reflectance 20%

ZONAL LUMEN SUMMARY

ZONE	LUMENS	%LUMINAIRE
0-30	1,545	94%
0-40	1,622	98.6%
0-60	1,640	99.7%
60-90	4.3	0.3%
0-90	1,645	100%

MULTIPLE UNIT DATA - (RCR 2)

SPACING ON CENTER	INITIAL FOOTCANDLES	WATTS/ SQ. FT.
5'	77	1.04
6'	43	0.59
7'	30	0.41
8'	30	0.41
9'	19	0.26

38' X 38' X 10' Room, Workplane 2-1/2" above floor,
80/50/20% Reflectances

CANDELA DISTRIBUTION

DEGREES VERTICAL	CANDELA	DEGREES VERTICAL	CANDELA
0	2,965	45	13
5	3,009	55	6
10	3,090	65	3
15	2,863	75	1
20	2,072	85	0
25	1,059	90	0
35	107		

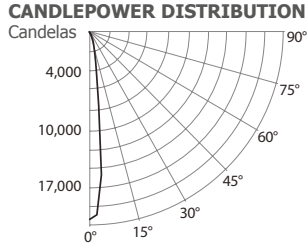


For temperature 3,500K, add 7% to the photometric data of the temperature 3,000K.

PHOTOMETRIC DATA
3,000K
Power 2

HexaLED 6" Series

3,000K, Power 2, Spot Beam



CONE OF LIGHT

Distance	FC	DIA
06'	561.7	1.6
08'	316.0	2.1
10'	202.2	2.6
12'	140.4	3.2
14'	103.2	3.7
16'	79.0	4.2
18'	62.4	4.8
20'	50.6	5.3

Beam: 15°
Beam Edge defined as 50% of Maximum Nadir Candle-power.

LUMINAIRE

Power 2 HexaLED	3,000K Spot Beam
Equivalent Bulbs	39W HID / 2X18W TTT
CBCP / Lumens	20,222 / 2,220
Watts	120V 277V 32.5W 32.5W
Operating AMPS	0.27A
Lumen Maintenance	L70 @ 50,000 Hrs
CRI	80 +
Lumens/Watt	68.3
Spacing Criteria	0.24
Certificate LM79-08	00028

Base on luminaire efficiency 85%

COEFFICIENT OF UTILIZATION - %

Ceiling Reflect %	80			50			30		
Wall Reflect %	50	30	50	30	50	30	50	30	50
RCR 0	119	119	111	111	106	106	106	106	106
2	108	105	103	101	101	99	99	99	99
4	100	97	97	94	96	93	96	93	93
6	94	90	92	89	91	88	91	88	88
8	89	85	88	84	87	84	87	84	84
10	85	81	84	81	83	80	83	80	80

Zonal Cavity Method Effective Floor Cavity Reflectance 20%

ZONAL LUMEN SUMMARY

ZONE	LUMENS	%LUMINAIRE
0-30	2,146	96.7%
0-40	2,197	99%
0-60	2,212	99.6%
60-90	7.8	0.4%
0-90	2,220	100%

MULTIPLE UNIT DATA - (RCR 2)

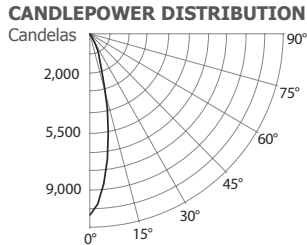
SPACING ON CENTER	INITIAL FOOTCANDLES	WATTS/SQ. FT.
5'	106	1.44
6'	60	0.81
7'	42	0.56
8'	42	0.56
9'	27	0.36

38' X 38' X 10' Room, Workplane 2-1/2" above floor, 80/50/20% Reflectances

CANDELA DISTRIBUTION

DEGREES VERTICAL	CANDELA	DEGREES VERTICAL	CANDELA
0	20,222	45	13
5	15,485	55	3
10	4,825	65	2
15	2,435	75	2
20	1,471	85	3
25	942	90	0
35	59		

3,000K, Power 2, Medium Beam



CONE OF LIGHT

Distance	FC	DIA
06'	282.6	2.4
08'	159.0	3.1
10'	101.7	3.9
12'	70.7	4.7
14'	51.9	5.5
16'	39.7	6.3
18'	31.4	7.1
20'	25.4	7.8

Beam: 22°
Beam Edge defined as 50% of Maximum Nadir Candle-power.

LUMINAIRE

Power 2 HexaLED	3,000K Medium Beam
Equivalent Bulbs	39W HID / 2X18W TTT
CBCP / Lumens	10,174 / 2,055
Watts	120V 277V 32.5W 32.5W
Operating AMPS	0.27A
Lumen Maintenance	L70 @ 50,000 Hrs
CRI	+ 80
Lumens/Watt	63.1
Spacing Criteria	0.37
Certificate LM79-08	00029

Base on luminaire efficiency 85%

COEFFICIENT OF UTILIZATION - %

Ceiling Reflect %	80			50			30		
Wall Reflect %	50	30	50	30	50	30	50	30	50
RCR 0	119	119	111	111	106	106	106	106	106
2	107	104	103	100	100	98	98	98	98
4	99	95	96	93	94	91	94	91	91
6	92	87	90	86	88	85	88	85	85
8	86	82	84	81	84	80	84	80	80
10	81	77	80	76	79	76	79	76	76

Zonal Cavity Method Effective Floor Cavity Reflectance 20%

ZONAL LUMEN SUMMARY

ZONE	LUMENS	%LUMINAIRE
0-30	1,973.7	96%
0-40	2,032.8	98.9%
0-60	2,049.1	99.7%
60-90	5.8	0.3%
0-90	2,055	100%

MULTIPLE UNIT DATA - (RCR 2)

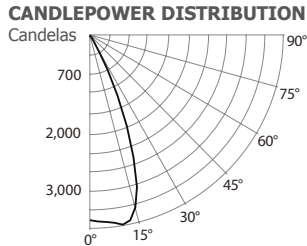
SPACING ON CENTER	INITIAL FOOTCANDLES	WATTS/SQ. FT.
5'	98	1.44
6'	55	0.81
7'	38	0.56
8'	38	0.56
9'	24	0.36

38' X 38' X 10' Room, Workplane 2-1/2" above floor, 80/50/20% Reflectances

CANDELA DISTRIBUTION

DEGREES VERTICAL	CANDELA	DEGREES VERTICAL	CANDELA
0	10,174	45	14
5	8,482	55	5
10	5,675	65	3
15	2,967	75	2
20	1,527	85	2
25	959	90	0
35	71		

3,000K, Power 2, Wide Beam



CONE OF LIGHT

Distance	FC	DIA
06'	105.6	5.1
08'	59.4	6.8
10'	38.0	8.5
12'	26.4	10.2
14'	19.4	11.8
16'	14.8	13.5
18'	11.7	15.2
20'	9.5	16.9

Beam: 46°
Beam Edge defined as 50% of Maximum Nadir Candle-power.

LUMINAIRE

Power 2 HexaLED	3,000K Wide Beam
Equivalent Bulbs	39W HID / 2X18W TTT
CBCP / Lumens	3,801 / 2,115
Watts	120V 277V 32.5W 32.5W
Operating AMPS	0.27A
Lumen Maintenance	L70 @ 50,000 Hrs
CRI	80 +
Lumens/Watt	65.3
Spacing Criteria	0.67
Certificate LM79-08	00030

Base on luminaire efficiency 85%

COEFFICIENT OF UTILIZATION - %

Ceiling Reflect %	80			50			30		
Wall Reflect %	50	30	50	30	50	30	50	30	50
RCR 0	119	119	111	111	106	106	106	106	106
2	106	102	101	99	98	96	98	96	96
4	95	91	92	89	90	87	90	87	87
6	87	82	85	81	83	80	83	80	80
8	80	75	78	74	77	74	77	74	74
10	73	69	72	68	72	68	72	68	68

Zonal Cavity Method Effective Floor Cavity Reflectance 20%

ZONAL LUMEN SUMMARY

ZONE	LUMENS	%LUMINAIRE
0-30	1,984	93.8%
0-40	2,083.8	98.5%
0-60	2,108	99.7%
60-90	7.2	0.3%
0-90	2,115	100%

MULTIPLE UNIT DATA - (RCR 2)

SPACING ON CENTER	INITIAL FOOTCANDLES	WATTS/SQ. FT.
5'	99	1.44
6'	56	0.81
7'	39	0.56
8'	39	0.56
9'	25	0.36

38' X 38' X 10' Room, Workplane 2-1/2" above floor, 80/50/20% Reflectances

CANDELA DISTRIBUTION

DEGREES VERTICAL	CANDELA	DEGREES VERTICAL	CANDELA
0	3,801	45	18
5	3,857	55	8
10	3,959	65	4
15	3,671	75	2
20	2,662	85	1
25	1,363	90	0
35	137		

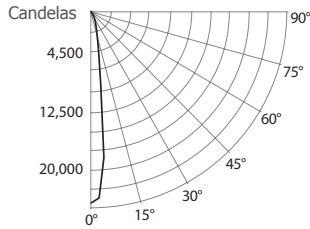


CONTRASTE

HexaLED 6" Series

3,000K, Power 3, Spot Beam

CANDLEPOWER DISTRIBUTION



CONE OF LIGHT

Distance	FC	DIA
06'	680.1	1.6
08'	382.6	2.1
10'	244.8	2.6
12'	170.0	3.2
14'	124.9	3.7
16'	95.6	4.2
18'	75.6	4.8
20'	61.2	5.3

Beam: 15°
Beam Edge defined as 50% of Maximum Nadir Candle-power.

LUMINAIRE

Power 3 HexaLED	3,000K Spot Beam
Equivalent Bulbs	50W HID / 2 X 26W TTT
CBCP / Lumens	24,484 / 2,678
Watts	120V 277V 42.7W 42.7W
Operating AMPS	0.36A
Lumen Maintenance	L70 @ 50,000 Hrs
CRI	80 +
Lumens/Watt	63.1
Spacing Criteria	0.24
Certificate LM79-08	00031
Base on luminaire efficiency	85%

COEFFICIENT OF UTILIZATION - %

Ceiling Reflect %	80		50		30	
Wall Reflect %	50	30	50	30	50	30
RCR 0	119	119	111	111	106	106
2	108	105	104	101	101	99
4	100	97	97	95	96	93
6	94	90	92	89	91	88
8	89	85	88	85	87	84
10	85	81	84	81	83	80

Zonal Cavity Method Effective Floor
Cavity Reflectance 20%

ZONAL LUMEN SUMMARY

ZONE	LUMENS	%LUMINAIRE
0-30	2,592.5	96.8%
0-40	2,653.2	99.1%
0-60	2,669.7	99.7%
60-90	7.8	0.3%
0-90	2,678	100%

MULTIPLE UNIT DATA - (RCR 2)

SPACING ON CENTER	INITIAL FOOTCANDLES	WATTS/SQ. FT.
5'	128	1.89
6'	72	1.06
7'	50	0.74
8'	50	0.74
9'	32	0.47

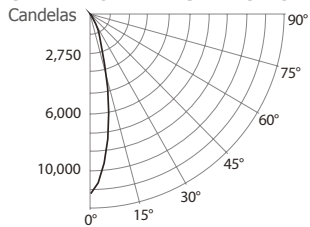
38' X 38' X 10' Room, Workplane 2-1/2" above floor,
80/50/20% Reflectances

CANDELA DISTRIBUTION

DEGREES VERTICAL	CANDELA	DEGREES VERTICAL	CANDELA
0	24,484	45	16
5	18,833	55	5
10	5,807	65	2
15	2,941	75	2
20	1,778	85	2
25	1,143	90	0
35	70		

3,000K, Power 3, Medium Beam

CANDLEPOWER DISTRIBUTION



CONE OF LIGHT

Distance	FC	DIA
06'	336.2	2.3
08'	189.1	3.1
10'	121.0	3.9
12'	84.0	4.7
14'	61.8	5.5
16'	47.3	6.3
18'	37.4	7.0
20'	30.3	7.8

Beam: 22°
Beam Edge defined as 50% of Maximum Nadir Candle-power.

LUMINAIRE

Power 3 HexaLED	3,000K Medium Beam
Equivalent Bulbs	50W HID / 2 X 26W TTT
CBCP / Lumens	12,103 / 2,468
Watts	120V 277V 42.7W 42.7W
Operating AMPS	0.36A
Lumen Maintenance	L70 @ 50,000 Hrs
CRI	80 +
Lumens/Watt	58.2
Spacing Criteria	0.37
Certificate LM79-08	00032
Base on luminaire efficiency	85%

COEFFICIENT OF UTILIZATION - %

Ceiling Reflect %	80		50		30	
Wall Reflect %	50	30	50	30	50	30
RCR 0	119	119	111	111	106	106
2	107	104	102	100	99	98
4	98	94	95	92	93	91
6	91	87	89	86	88	85
8	85	81	84	80	83	80
10	80	76	79	76	79	75

Zonal Cavity Method Effective Floor
Cavity Reflectance 20%

ZONAL LUMEN SUMMARY

ZONE	LUMENS	%LUMINAIRE
0-30	2,344.3	95%
0-40	2,416.7	97.9%
0-60	2,445.2	99.1%
60-90	22.6	0.9%
0-90	2,468	100%

MULTIPLE UNIT DATA - (RCR 2)

SPACING ON CENTER	INITIAL FOOTCANDLES	WATTS/SQ. FT.
5'	117	1.89
6'	66	1.06
7'	46	0.74
8'	46	0.74
9'	29	0.47

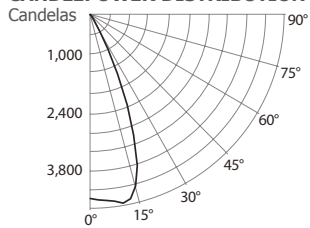
38' X 38' X 10' Room, Workplane 2-1/2" above floor,
80/50/20% Reflectances

CANDELA DISTRIBUTION

DEGREES VERTICAL	CANDELA	DEGREES VERTICAL	CANDELA
0	12,103	45	22
5	10,088	55	11
10	6,749	65	9
15	3,502	75	7
20	1,811	85	6
25	1,145	90	0
35	90		

3,000K, Power 3, Wide Beam

CANDLEPOWER DISTRIBUTION



CONE OF LIGHT

Distance	FC	DIA
06'	128.4	5.1
08'	72.2	6.8
10'	46.2	8.5
12'	32.1	10.2
14'	23.6	11.9
16'	18.1	13.5
18'	14.3	15.2
20'	11.6	16.9

Beam: 46°
Beam Edge defined as 50% of Maximum Nadir Candle-power.

LUMINAIRE

Power 3 HexaLED	3,000K Wide Beam
Equivalent Bulbs	50W HID / 2 X 26W TTT
CBCP / Lumens	4,621 / 2,573
Watts	120V 277V 42.7W 42.7W
Operating AMPS	0.36A
Lumen Maintenance	L70 @ 50,000 Hrs
CRI	80 +
Lumens/Watt	60.2
Spacing Criteria	0.67
Certificate LM79-08	00033
Base on luminaire efficiency	85%

COEFFICIENT OF UTILIZATION - %

Ceiling Reflect %	80		50		30	
Wall Reflect %	50	30	50	30	50	30
RCR 0	119	119	111	111	106	106
2	106	103	101	99	98	96
4	96	91	92	89	90	87
6	87	82	85	81	84	80
8	80	75	78	74	77	74
10	74	69	72	68	72	68

Zonal Cavity Method Effective Floor
Cavity Reflectance 20%

ZONAL LUMEN SUMMARY

ZONE	LUMENS	%LUMINAIRE
0-30	2,414.8	93.9%
0-40	2,536.1	98.6%
0-60	2,564.9	99.7%
60-90	7.6	0.3%
0-90	2,573	100%

MULTIPLE UNIT DATA - (RCR 2)

SPACING ON CENTER	INITIAL FOOTCANDLES	WATTS/SQ. FT.
5'	120	1.89
6'	68	1.06
7'	47	0.74
8'	47	0.74
9'	30	0.47

38' X 38' X 10' Room, Workplane 2-1/2" above floor,
80/50/20% Reflectances

CANDELA DISTRIBUTION

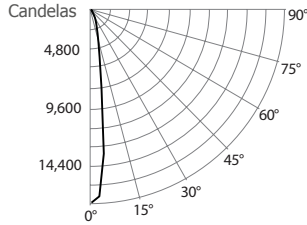
DEGREES VERTICAL	CANDELA	DEGREES VERTICAL	CANDELA
0	4,621	45	21
5	4,694	55	10
10	4,817	65	5
15	4,471	75	2
20	3,238	85	0
25	1,661	90	0
35	167		



HexaLED 6" Series

4,000K, Power 1, Spot Beam

CANDLEPOWER DISTRIBUTION



CONE OF LIGHT

Distance	FC	DIA
06'	477.3	1.4'
08'	268.5	1.9'
10'	171.8	2.4'
12'	119.3	2.9'
14'	87.7	3.4'
16'	67.1	3.8'
18'	53.0	4.3'
20'	43.0	4.8'

Beam: 14°
Beam Edge defined as 50% of Maximum Nadir Candle-power.

LUMINAIRE

Power 1 HexaLED	4,000K Spot Beam
Equivalent Bulbs	39W HID / 2 X 18W DTT
CBCP / Lumens	17,181 / 1,941
Watts	120V 277V 23.5W 23.5W
Operating AMPS	0.19A
Lumen Maintenance	L70 @ 50,000 Hrs
CRI	80 +
Lumens/Watt	85
Spacing Criteria	0.2
Certificate LM79-08	229988

Base on luminaire efficiency 85%

COEFFICIENT OF UTILIZATION - %

Ceiling Reflect %	80		50		30	
Wall Reflect %	50	30	50	30	50	30
RCR 0	119	119	111	111	106	106
2	110	108	105	103	102	101
4	104	101	101	99	99	97
6	99	96	97	95	96	94
8	95	92	94	91	93	91
10	91	89	91	88	90	88

Zonal Cavity Method Effective Floor
Cavity Reflectance 20%

ZONAL LUMEN SUMMARY

ZONE	LUMENS	%LUMINAIRE
0-30	1,869,6	96.3%
0-40	1,918,3	98.8%
0-60	1,933,7	99.6%
60-90	8.0	0.4%
0-90	1,941	100%

MULTIPLE UNIT DATA - (RCR 2)

SPACING ON CENTER	INITIAL FOOTCANDLES	WATTS/SQ. FT.
5'	93	1.04
6'	52	0.58
7'	36	0.41
8'	36	0.41
9'	23	0.26

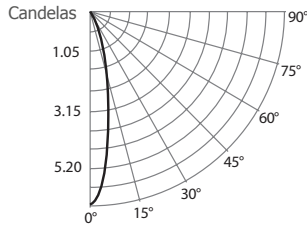
38' X 38' X 10' Room, Workplane 2-1/2" above floor,
80/50/20% Reflectances

CANDELA DISTRIBUTION

DEGREES VERTICAL	CANDELA	DEGREES VERTICAL	CANDELA
0	17,180	45	13
5	12,890	55	5
10	4,294	65	4
15	2,200	75	2
20	1,316	85	2
25	809	90	0
35	56		

4,000K, Power 1, Medium Beam

CANDLEPOWER DISTRIBUTION



CONE OF LIGHT

Distance	FC	DIA
06'	260.5	2.2'
08'	146.5	2.9'
10'	93.8	3.6'
12'	65.1	4.3'
14'	47.9	5.0'
16'	36.6	5.7'
18'	28.9	6.5'
20'	23.4	7.2'

Beam: 20°
Beam Edge defined as 50% of Maximum Nadir Candle-power.

LUMINAIRE

Power 1 HexaLED	4,000K Medium Beam
Equivalent Bulbs	39W HID / 2 X 18W DTT
CBCP / Lumens	9,379 / 1,855
Watts	120V 277V 23.5W 23.5W
Operating AMPS	0.19A
Lumen Maintenance	L70 @ 50,000 Hrs
CRI	80 +
Lumens/Watt	81
Spacing Criteria	0.4
Certificate LM79-08	229995

Base on luminaire efficiency 85%

COEFFICIENT OF UTILIZATION - %

Ceiling Reflect %	80		50		30	
Wall Reflect %	50	30	50	30	50	30
RCR 0	119	119	111	111	106	106
2	110	107	105	103	102	101
4	103	100	101	98	99	97
6	98	95	96	94	95	93
8	94	91	92	90	92	89
10	90	87	89	86	88	86

Zonal Cavity Method Effective Floor
Cavity Reflectance 20%

ZONAL LUMEN SUMMARY

ZONE	LUMENS	%LUMINAIRE
0-30	1,788,0	95.9%
0-40	1,840,5	98.4%
0-60	1,853,1	99.3%
60-90	1.9	0.7%
0-90	1,855	100%

MULTIPLE UNIT DATA - (RCR 2)

SPACING ON CENTER	INITIAL FOOTCANDLES	WATTS/SQ. FT.
5'	88	1.04
6'	50	0.58
7'	34	0.41
8'	34	0.41
9'	22	0.26

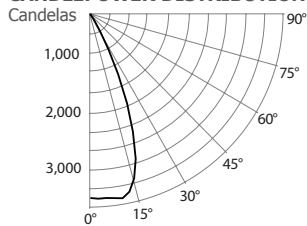
38' X 38' X 10' Room, Workplane 2-1/2" above floor,
80/50/20% Reflectances

CANDELA DISTRIBUTION

DEGREES VERTICAL	CANDELA	DEGREES VERTICAL	CANDELA
0	9,379	45	12
5	7,783	55	3
10	5,147	65	1
15	2,672	75	0
20	1,375	85	0
25	861	90	0
35	63		

4,000K, Power 1, Wide Beam

CANDLEPOWER DISTRIBUTION



CONE OF LIGHT

Distance	FC	DIA
06'	92.7	5.1'
08'	52.2	6.8'
10'	33.4	8.5'
12'	23.2	10.1'
14'	17.0	11.8'
16'	13.0	13.5'
18'	10.3	15.2'
20'	8.3	16.9'

Beam: 46°
Beam Edge defined as 50% of Maximum Nadir Candle-power.

LUMINAIRE

Power 1 HexaLED	4,000K Wide Beam
Equivalent Bulbs	26W TTT
CBCP / Lumens	3,338 / 1,822
Watts	120V 277V 23.5W 23.5W
Operating AMPS	0.19A
Lumen Maintenance	L70 @ 50,000 Hrs
CRI	80 +
Lumens/Watt	79
Spacing Criteria	0.7
Certificate LM79-08	230001

Base on luminaire efficiency 85%

COEFFICIENT OF UTILIZATION - %

Ceiling Reflect %	80		50		30	
Wall Reflect %	50	30	50	30	50	30
RCR 0	119	119	111	111	106	106
2	109	106	104	102	101	100
4	101	98	98	96	96	94
6	95	91	93	90	92	89
8	89	85	88	85	87	84
10	84	81	83	80	83	80

Zonal Cavity Method Effective Floor
Cavity Reflectance 20%

ZONAL LUMEN SUMMARY

ZONE	LUMENS	%LUMINAIRE
0-30	1,706,1	93.8%
0-40	1,795,8	98.1%
0-60	1,817,0	99.3%
60-90	6.3	0.7%
0-90	1,823,3	100%

MULTIPLE UNIT DATA - (RCR 2)

SPACING ON CENTER	INITIAL FOOTCANDLES	WATTS/SQ. FT.
5'	85	1.03
6'	48	0.58
7'	33	0.4
8'	33	0.4
9'	21	0.26

38' X 38' X 10' Room, Workplane 2-1/2" above floor,
80/50/20% Reflectances

CANDELA DISTRIBUTION

DEGREES VERTICAL	CANDELA	DEGREES VERTICAL	CANDELA
0	3,338	45	16
5	3,355	55	7
10	3,395	65	3
15	3,095	75	2
20	2,274	85	1
25	1,210	90	0
35	122		



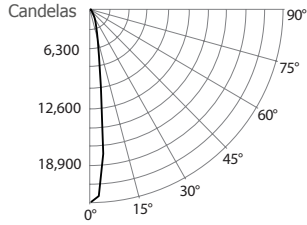
For temperature 3,500K, add 7% to the photometric data of the temperature 3,000K.

PHOTOMETRIC DATA
4,000K
Power 2

HexaLED 6" Series

4,000K, Power 2, Spot Beam

CANDLEPOWER DISTRIBUTION



CONE OF LIGHT

Distance	FC	DIA
06'	626.7	1.4'
08'	352.5	1.9'
10'	225.6	2.4'
12'	156.7	2.9'
14'	115.1	3.4'
16'	88.1	3.8'
18'	69.6	4.3'
20'	56.4	4.8'

Beam: 14°
Beam Edge defined as 50% of Maximum Nadir Candle-power.

LUMINAIRE

Power 2 HexaLED	4,000K Spot Beam
Equivalent Bulbs	50W HID / 2 X 26W TTT
CBCP / Lumens	22,560 / 2,564
Watts	120V 277V 32.5W 32.5W
Operating AMPS	0.27A
Lumen Maintenance	L70 @ 50,000 Hrs
CRI	80 +
Lumens/Watt	81
Spacing Criteria	0.2
Certificate LM79-08	229990

Base on luminaire efficiency 85%

COEFFICIENT OF UTILIZATION - %

Ceiling Reflect %	80		50		30	
Wall Reflect %	50	30	50	30	50	30
RCR 0	119	119	111	111	106	106
2	110	107	105	103	102	101
4	104	101	101	98	99	97
6	99	96	97	95	96	94
8	95	92	93	91	93	90
10	91	88	90	88	90	87

Zonal Cavity Method Effective Floor
Cavity Reflectance 20%

ZONAL LUMEN SUMMARY

ZONE	LUMENS	%LUMINAIRE
0-30	2,459,6	95.9%
0-40	2,524,7	98.5%
0-60	2,548,7	99.4%
60-90	15.5	0.6%
0-90	2,564	100%

MULTIPLE UNIT DATA - (RCR 2)

SPACING ON CENTER	INITIAL FOOTCANDLES	WATTS/SQ. FT.
5'	122	1.46
6'	69	0.82
7'	48	0.57
8'	48	0.57
9'	31	0.37

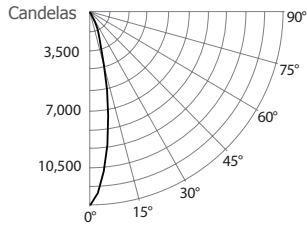
38' X 38' X 10' Room, Workplane 2-1/2" above floor,
80/50/20% Reflectances

CANDELA DISTRIBUTION

DEGREES VERTICAL	CANDELA	DEGREES VERTICAL	CANDELA
0	22,560	45	19
5	17,011	55	8
10	5,648	65	6
15	2,887	75	5
20	1,728	85	3
25	1,066	90	0
35	75		

4,000K, Power 2, Medium Beam

CANDLEPOWER DISTRIBUTION



CONE OF LIGHT

Distance	FC	DIA
06'	344.3	2.3'
08'	193.6	3.1'
10'	123.9	3.8'
12'	86.1	4.6'
14'	63.2	5.4'
16'	48.4	6.1'
18'	38.3	6.9'
20'	31.0	7.7'

Beam: 22°
Beam Edge defined as 50% of Maximum Nadir Candle-power.

LUMINAIRE

Power 2 HexaLED	4,000K Medium Beam
Equivalent Bulbs	50W HID / 2 X 26W TTT
CBCP / Lumens	12,393 / 2,439
Watts	120V 277V 32.5W 32.5W
Operating AMPS	0.27A
Lumen Maintenance	L70 @ 50,000 Hrs
CRI	80 +
Lumens/Watt	76
Spacing Criteria	0.4
Certificate LM79-08	229997

Base on luminaire efficiency 85%

COEFFICIENT OF UTILIZATION - %

Ceiling Reflect %	80		50		30	
Wall Reflect %	50	30	50	30	50	30
RCR 0	119	119	111	111	106	106
2	110	107	105	103	102	101
4	103	100	101	98	99	97
6	98	95	96	94	95	93
8	94	91	92	90	92	89
10	90	87	89	86	88	86

Zonal Cavity Method Effective Floor
Cavity Reflectance 20%

ZONAL LUMEN SUMMARY

ZONE	LUMENS	%LUMINAIRE
0-30	2,351,7	96.4%
0-40	2,420,2	99.2%
0-60	2,436,1	99.9%
60-90	3.0	0.1%
0-90	2,439	100%

MULTIPLE UNIT DATA - (RCR 2)

SPACING ON CENTER	INITIAL FOOTCANDLES	WATTS/SQ. FT.
5'	116	1.47
6'	65	0.83
7'	45	0.57
8'	45	0.57
9'	29	0.37

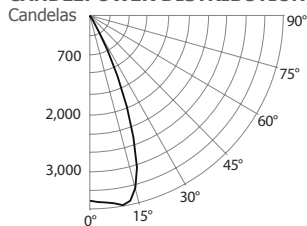
38' X 38' X 10' Room, Workplane 2-1/2" above floor,
80/50/20% Reflectances

CANDELA DISTRIBUTION

DEGREES VERTICAL	CANDELA	DEGREES VERTICAL	CANDELA
0	12,393	45	16
5	10,263	55	4
10	6,762	65	2
15	3,492	75	1
20	1,804	85	0
25	1,141	90	0
35	83		

4,000K, Power 2, Wide Beam

CANDLEPOWER DISTRIBUTION



CONE OF LIGHT

Distance	FC	DIA
06'	121.6	5.1'
08'	68.4	6.8'
10'	43.8	8.5'
12'	30.4	10.1'
14'	22.3	11.8'
16'	17.1	13.5'
18'	13.5	15.2'
20'	10.9	16.9'

Beam: 46°
Beam Edge defined as 50% of Maximum Nadir Candle-power.

LUMINAIRE

Power 2 HexaLED	4,000K Wide Beam
Equivalent Bulbs	50W HID / 2 X 26W TTT
CBCP / Lumens	4,379 / 2,389
Watts	120V 277V 32.5W 32.5W
Operating AMPS	0.7A
Lumen Maintenance	L70 @ 50,000 Hrs
CRI	80 +
Lumens/Watt	75
Spacing Criteria	0.7
Certificate LM79-08	230003

Base on luminaire efficiency 85%

COEFFICIENT OF UTILIZATION - %

Ceiling Reflect %	80		50		30	
Wall Reflect %	50	30	50	30	50	30
RCR 0	119	119	111	111	106	106
2	109	106	104	102	101	100
4	101	98	98	96	96	94
6	95	91	93	90	92	89
8	89	85	88	85	87	84
10	84	81	83	80	83	80

Zonal Cavity Method Effective Floor
Cavity Reflectance 20%

ZONAL LUMEN SUMMARY

ZONE	LUMENS	%LUMINAIRE
0-30	2,238,3	93.7%
0-40	2,355,9	98.6%
0-60	2,382,9	99.7%
60-90	6.8	0.3%
0-90	2,389	100%

MULTIPLE UNIT DATA - (RCR 2)

SPACING ON CENTER	INITIAL FOOTCANDLES	WATTS/SQ. FT.
5'	112	1.44
6'	63	0.81
7'	44	0.56
8'	44	0.56
9'	28	0.36

38' X 38' X 10' Room, Workplane 2-1/2" above floor,
80/50/20% Reflectances

CANDELA DISTRIBUTION

DEGREES VERTICAL	CANDELA	DEGREES VERTICAL	CANDELA
0	4,379	45	20
5	4,399	55	8
10	4,449	65	4
15	4,060	75	2
20	2,986	85	1
25	1,587	90	0
35	159		

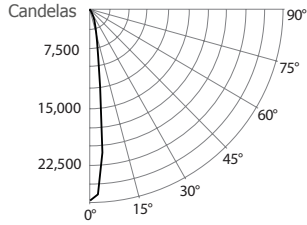


CONTRASTE

HexaLED 6" Series

4,000K, Power 3, Spot Beam

CANDLEPOWER DISTRIBUTION



CONE OF LIGHT

Distance	FC	DIA
06'	756.7	1.4
08'	425.7	1.9
10'	272.4	2.4
12'	189.2	2.9
14'	139.0	3.4
16'	106.4	3.8
18'	84.1	4.3
20'	68.1	4.8

Beam: 14°
Beam Edge defined as 50%
of Maximum Nadir Candle-power.

LUMINAIRE

Power 3 HexaLED	4,000K Spot Beam
Equivalent Bulbs	70W HID / 2 X 32W TTT
CBCP / Lumens	27,242 / 3,087
Watts	120V 277V 42.25W 42.25W
Operating AMPS	0.35A
Lumen Maintenance	L70 @ 50,000 Hrs
CRI	80 +
Lumens/Watt	73
Spacing Criteria	0.2
Certificate LM79-08	229993

Base on luminaire efficiency 85%

COEFFICIENT OF UTILIZATION - %

Ceiling Reflect %	80	50	30				
Wall Reflect %	50	30	50	30			
RCR	0	119	119	111	111	106	106
	2	110	107	105	103	102	101
	4	104	101	101	99	99	97
	6	99	96	97	95	96	94
	8	95	92	94	91	93	90
	10	91	89	90	88	90	88

Zonal Cavity Method Effective Floor
Cavity Reflectance 20%

ZONAL LUMEN SUMMARY

ZONE	LUMENS	%LUMINAIRE
0-30	2,970.4	96.2%
0-40	3,048.9	98.7%
0-60	3,074.7	99.6%
60-90	12.8	0.4%
0-90	3,087	100%

MULTIPLE UNIT DATA - (RCR 2)

SPACING ON CENTER	INITIAL FOOTCANDLES	WATTS/SQ. FT.
5'	148	1.9
6'	83	1.07
7'	58	0.74
8'	58	0.74
9'	37	0.47

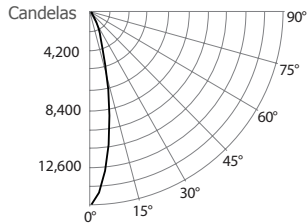
38' X 38' X 10' Room, Workplane 2-1/2" above floor,
80/50/20% Reflectances

CANDELA DISTRIBUTION

DEGREES VERTICAL	CANDELA	DEGREES VERTICAL	CANDELA
0	27,242	45	23
5	20,542	55	7
10	6,825	65	5
15	3,487	75	4
20	2,086	85	3
25	1,281	90	0
35	89		

4,000K, Power 3, Medium Beam

CANDLEPOWER DISTRIBUTION



CONE OF LIGHT

Distance	FC	DIA
06'	414.7	2.3
08'	233.3	3.1
10'	149.3	3.8
12'	103.7	4.6
14'	76.2	5.4
16'	58.3	6.1
18'	46.1	6.9
20'	37.3	7.7

Beam: 22°
Beam Edge defined as 50%
of Maximum Nadir Candle-power.

LUMINAIRE

Power 3 HexaLED	4,000K Medium Beam
Equivalent Bulbs	70W HID / 2 X 32W TTT
CBCP / Lumens	14,930 / 2,949
Watts	120V 277V 42.25W 42.25W
Operating AMPS	0.35A
Lumen Maintenance	L70 @ 50,000 Hrs
CRI	80 +
Lumens/Watt	69
Spacing Criteria	0.4
Certificate LM79-08	229999

Base on luminaire efficiency 85%

COEFFICIENT OF UTILIZATION - %

Ceiling Reflect %	80	50	30				
Wall Reflect %	50	30	50	30			
RCR	0	119	119	111	111	106	106
	2	110	107	105	103	102	101
	4	103	100	100	98	99	97
	6	98	95	96	94	95	93
	8	94	90	92	89	92	89
	10	90	87	89	86	88	86

Zonal Cavity Method Effective Floor
Cavity Reflectance 20%

ZONAL LUMEN SUMMARY

ZONE	LUMENS	%LUMINAIRE
0-30	2,835.1	96.1%
0-40	2,917.0	98.9%
0-60	2,940.5	99.7%
60-90	9.1	0.3%
0-90	2,949	100%

MULTIPLE UNIT DATA - (RCR 2)

SPACING ON CENTER	INITIAL FOOTCANDLES	WATTS/SQ. FT.
5'	140	1.9
6'	79	1.07
7'	55	0.74
8'	55	0.74
9'	35	0.47

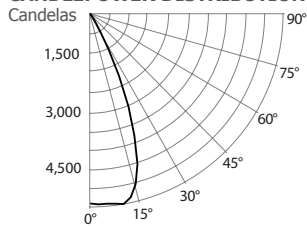
38' X 38' X 10' Room, Workplane 2-1/2" above floor,
80/50/20% Reflectances

CANDELA DISTRIBUTION

DEGREES VERTICAL	CANDELA	DEGREES VERTICAL	CANDELA
0	14,930	45	14
5	12,384	55	10
10	8,158	65	7
15	4,210	75	6
20	2,172	85	5
25	1,374	90	4
35	100		

4,000K, Power 3, Wide Beam

CANDLEPOWER DISTRIBUTION



CONE OF LIGHT

Distance	FC	DIA
06'	146.8	5.1
08'	82.6	6.8
10'	52.8	8.5
12'	36.7	10.2
14'	27.0	11.9
16'	20.6	13.5
18'	16.3	15.2
20'	13.2	16.9

Beam: 46°
Beam Edge defined as 50%
of Maximum Nadir Candle-power.

LUMINAIRE

Power 3 HexaLED	4,000K Wide Beam
Equivalent Bulbs	70W HID / 2 X 32W TTT
CBCP / Lumens	5,284 / 2,886
Watts	120V 277V 42.25W 42.25W
Operating AMPS	0.35A
Lumen Maintenance	L70 @ 50,000 Hrs
CRI	80 +
Lumens/Watt	68
Spacing Criteria	0.7
Certificate LM79-08	229933

Base on luminaire efficiency 85%

COEFFICIENT OF UTILIZATION - %

Ceiling Reflect %	80	50	30				
Wall Reflect %	50	30	50	30			
RCR	0	119	119	111	111	106	106
	2	109	106	104	102	101	100
	4	101	98	98	96	96	94
	6	95	91	93	90	92	89
	8	89	86	88	85	87	84
	10	84	81	83	80	83	80

Zonal Cavity Method Effective Floor
Cavity Reflectance 20%

ZONAL LUMEN SUMMARY

ZONE	LUMENS	%LUMINAIRE
0-30	2,706.3	93.8%
0-40	2,846.2	98.1%
0-60	2,879.0	99.3%
60-90	8.9	0.7%
0-90	2,887	100%

MULTIPLE UNIT DATA - (RCR 2)

SPACING ON CENTER	INITIAL FOOTCANDLES	WATTS/SQ. FT.
5'	135	1.89
6'	76	1.06
7'	53	0.74
8'	53	0.74
9'	34	0.47

38' X 38' X 10' Room, Workplane 2-1/2" above floor,
80/50/20% Reflectances

CANDELA DISTRIBUTION

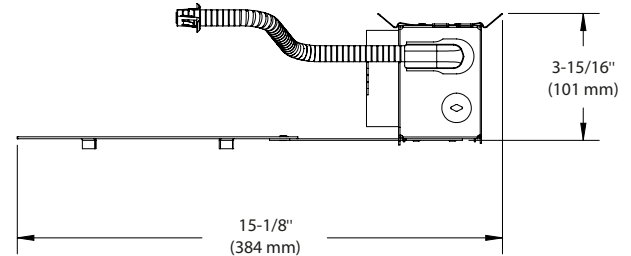
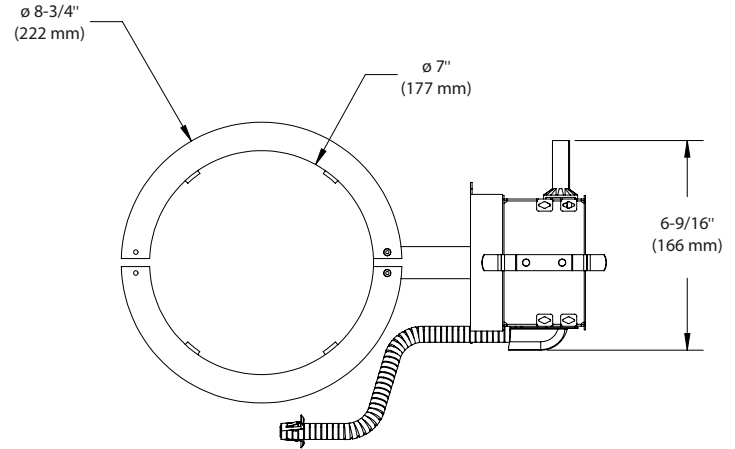
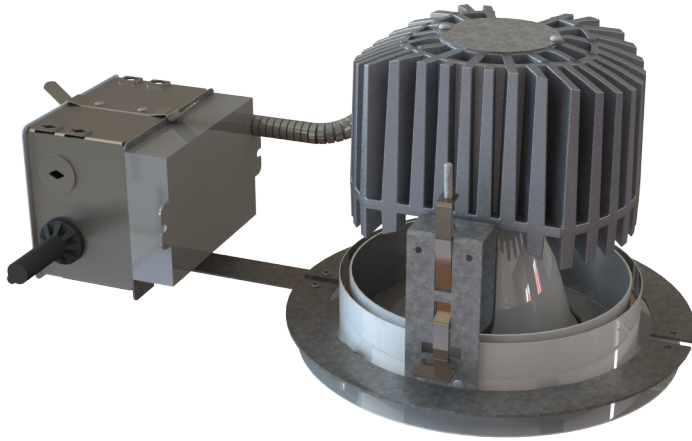
DEGREES VERTICAL	CANDELA	DEGREES VERTICAL	CANDELA
0	5,284	45	24
5	5,316	55	10
10	5,386	65	5
15	4,915	75	2
20	3,611	85	1
25	1,916	90	0
35	193		



HexaLED

6" Series

HexaLED 6" Remodel Housing



18" (457 mm) BX

SPECIFICATIONS

HOUSING DETAILS	Galvanized steel Below-ceiling accessible.
MOUNTING	Ceiling cutout: 7" (178 mm) Perfect fit into ceiling. No light leak. Fit into up to 7/8" (22 mm) ceiling thickness. May be installed in trusses or suspended ceilings. 18" (457 mm) BX for easy installation and access to the trim.
DRIVER	Constant current output.
WATTAGE	22W, 30W and 40W

DIMMING	3 compatible types of dimmers: <ul style="list-style-type: none"> • Electronic Low Voltage (ELV) • 0-10V (Sinking Control) • Lutron Hi-Lume A-Series LED Driver with Eco System Control / 3-wire (CCR)
---------	---

Due to constant evolution of LED lamps and associated dimmers we must test them regularly. We invite you to consult frequently our Web site to find our dimmer compatibility list: www.contrastlighting.com

WARRANTY	5 year warranty on LED module and driver
----------	--

CONTRASTE

2018-01
Revision 1

PRINTED IN CANADA

1009, rue du Parc Industriel
Lévis (Québec) G6Z 1C5 Canada
Tel.: 1-888-839-4624
Fax.: 1-877-839-7057
contrastlighting.com
info@contrastlighting.com

© 2018 Contraste Lighting M.L. Inc.
All rights reserved

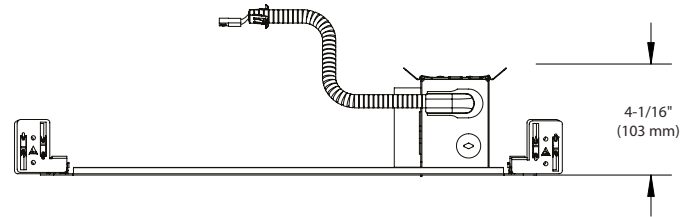
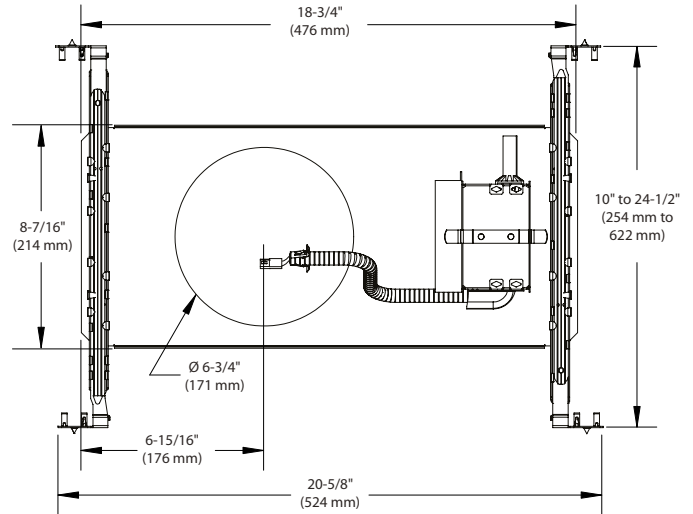
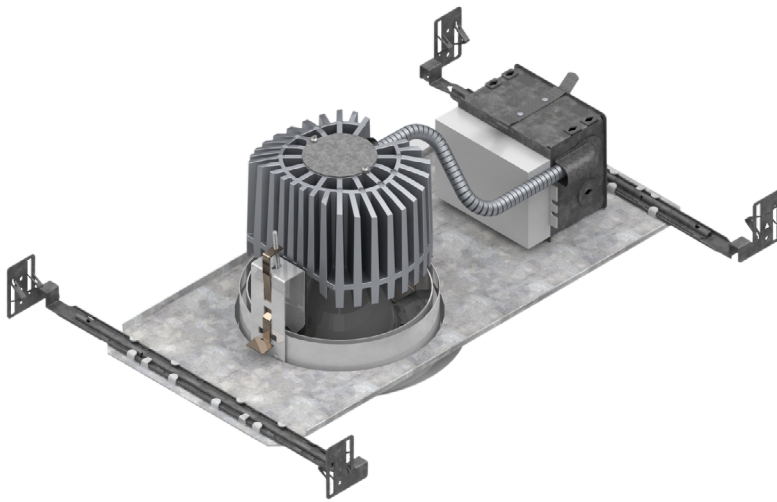
Contrast Lighting M.L. Inc. reserves the right to make changes in specifications and/or to discontinue any product at any time without notice or obligation and will not be liable for any consequences resulting from the use of this publication.



HexaLED

6" Series

HexaLED 6" New Construction Housing



SPECIFICATIONS

HOUSING DETAILS	Galvanized steel Below-ceiling accessible.
MOUNTING	Ceiling cutout: 6-3/4" (171 mm) Perfect fit into ceiling. No light leak. Fit into up to 7/8" (22 mm) ceiling thickness. Mounting bars lock into place and adjust from 10" (254 mm) to 24-1/2" (622 mm) on the integral T-Bars tabs. May be installed in trusses or suspended ceilings. 18" (457 mm) BX for easy installation and access to the trim.
DRIVER	Constant current output.
WATTAGE	22W, 30W and 40W

DIMMING	3 compatible types of dimmers: <ul style="list-style-type: none"> • Electronic Low Voltage (ELV) • 0-10V (Sinking Control) • Lutron Hi-Lume A-Series LED Driver with Eco System Control / 3-wire (CCR)
---------	---

Due to constant evolution of LED lamps and associated dimmers we must test them regularly. We invite you to consult frequently our Web site to find our dimmer compatibility list: www.contrastlighting.com

WARRANTY	5 year warranty on LED module and driver
----------	--

CONTRASTE

2018-01
Revision 1

PRINTED IN CANADA

1009, rue du Parc Industriel
Lévis (Québec) G6Z 1C5 Canada
Tel.: 1-888-839-4624
Fax.: 1-877-839-7057
contrastlighting.com
info@contrastlighting.com

© 2018 Contraste Lighting M.L. Inc.
All rights reserved

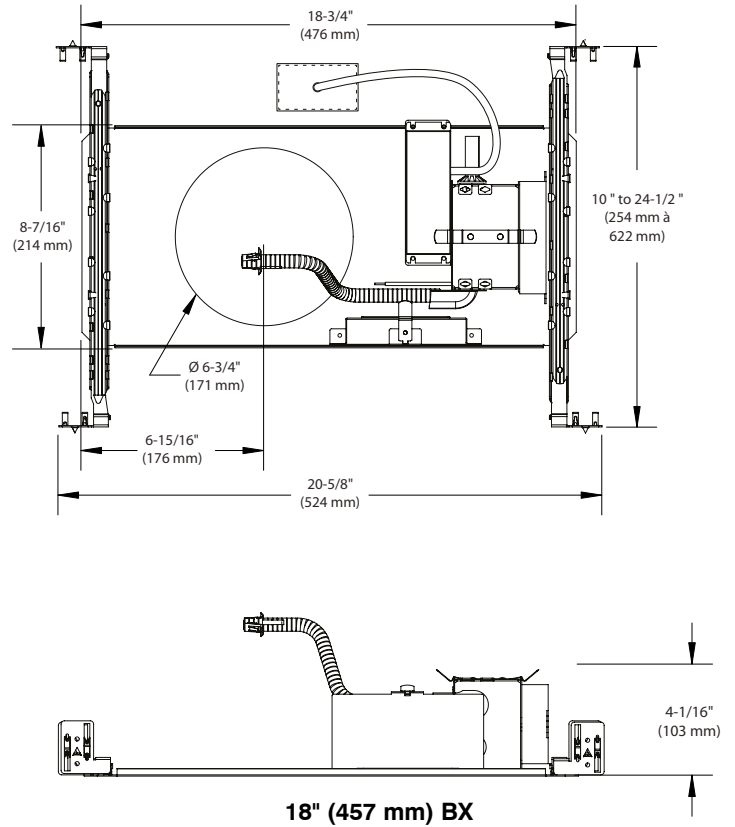
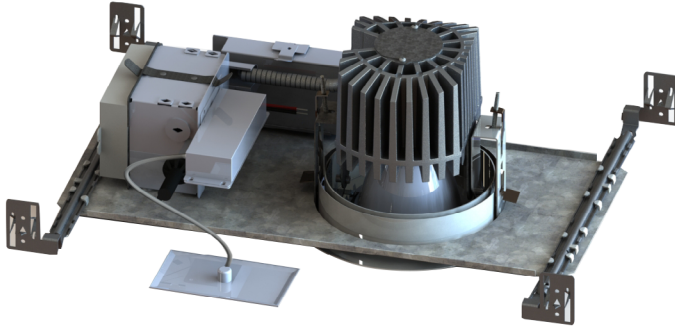
Contrast Lighting M.L. Inc. reserves the right to make changes in specifications and/or to discontinue any product at any time without notice or obligation and will not be liable for any consequences resulting from the use of this publication.



HexaLED Emergency Lighting

6" Series

HexaLED 6" New Construction Housing with Emergency Lighting



SPECIFICATIONS

EMERGENCY LIGHTING	<p>Runtime: 120 minutes minimum</p> <p>Maximum height installation: 50'</p> <p>Test button and mounting plate: included</p> <p>Battery Lifespan: 5 years</p>
HOUSING DETAILS	<p>Galvanized steel</p> <p>Below-ceiling accessible.</p>
MOUNTING	<p>Ceiling cutout: 6-3/4" (171 mm)</p> <p>Perfect fit into ceiling. No light leak. Fit into up to 7/8" (22 mm) ceiling thickness. Mounting bars lock into place and adjust from 10" (254 mm) to 24-1/2" (622 mm) on the integral T-Bars tabs. May be installed in trusses or suspended ceilings. 18" (457 mm) BX for easy installation and access to the trim.</p>
DRIVER	Constant current output
WATTAGE	22W, 30W and 40W

DIMMING	<p>3 compatible types of dimmers:</p> <ul style="list-style-type: none"> • Electronic Low Voltage (ELV) • 0-10V (Sinking Control) • Lutron Hi-Lume A-Series LED Driver with Eco System Control / 3-wire (CCR)
---------	--

Due to constant evolution of LED lamps and associated dimmers we must test them regularly.

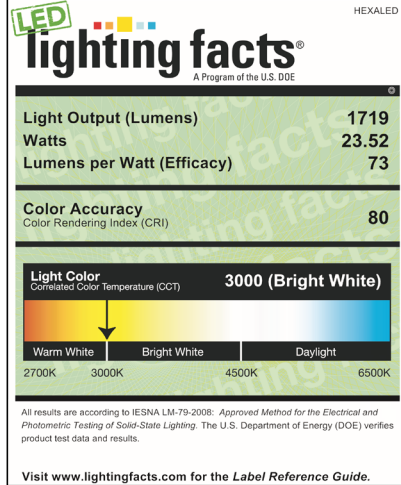
We invite you to consult frequently our Web site to find our dimmer compatibility list: www.contrastlighting.com

WARRANTY	5 year warranty on LED module and driver
----------	--

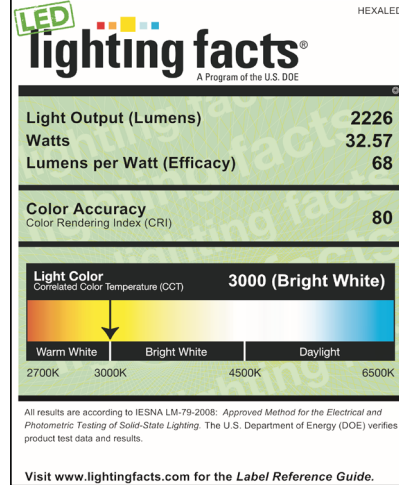
HexaLED

6" Series

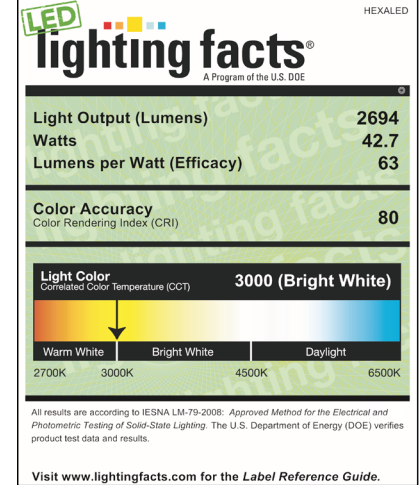
HEXDL-XX-3080S - NWHEX1D3P1



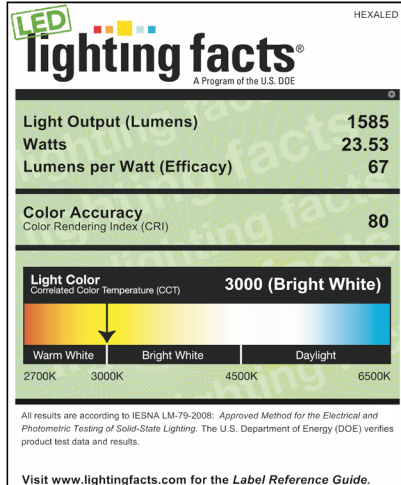
HEXDL-XX-3080S - NWHEX1D3P1



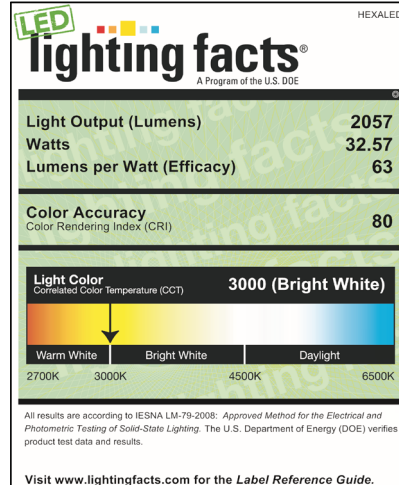
HEXDL-XX-3080S - NWHEX1D3P1



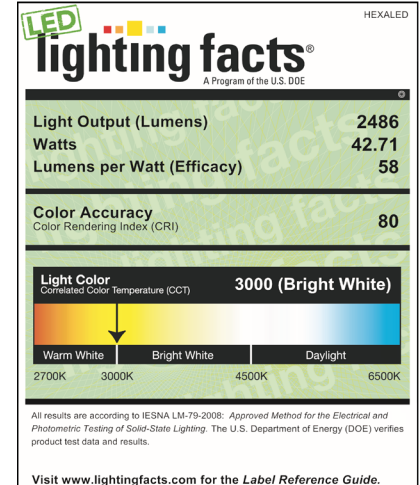
HEXDL-XX-3080M - NWHEX1D3P1



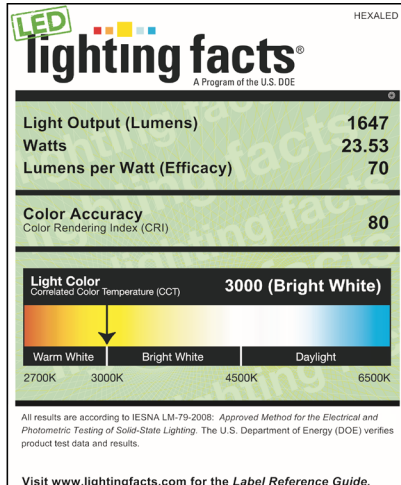
HEXDL-XX-3080M - NWHEX1D3P2



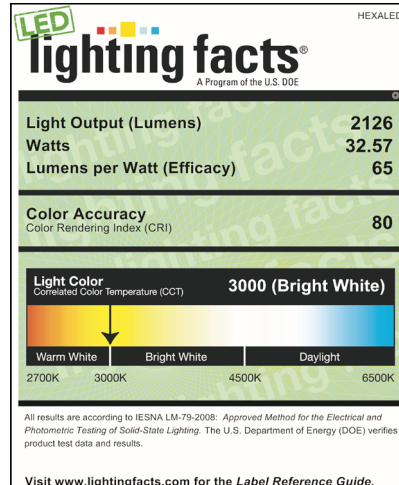
HEXDL-XX-3080M - NWHEX1D3P3



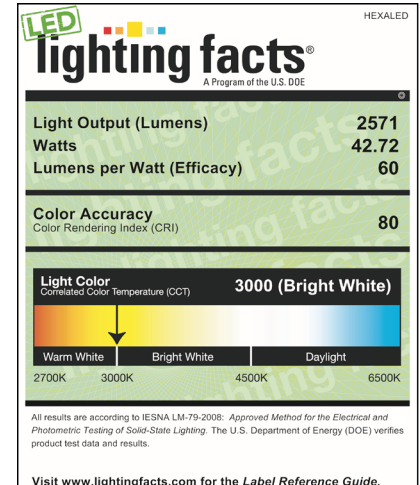
HEXDL-XX-3080W - NWHEX1D3P1



HEXDL-XX-3080W - NWHEX1D3P1



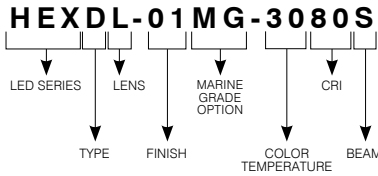
HEXDL-XX-3080W - NWHEX1D3P1



HexaLED

6" Series

TRIM CODIFICATION EXAMPLE



ORDERING CODES for Trim

LED SERIES	TYPE	LENS	FINISHES	MARINE GRADE	COLOR TEMPERATURES	CRI	BEAMS
HEX	D	L					
HEX	D Adjustable	L Lens	-01 White	... Standard	-30 3,000K	80 80+	S Spot (15°)
			-02 Black	MG Marine Grade	-35 3,500K	90 90+	M Medium (21°)
			-11 Matte White		-40 4,000K	(Only for 3,000K)	W Wide (46°)
			-15 Metallic Grey				

MARINE GRADE

2-year warranty on finish

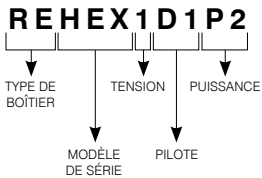
This option increases the painted finishes resistance by reducing and delaying apparition and propagation of oxidation (ex: rust and others).

MARINE GRADE treatment is recommended for damp to wet locations.

Unless otherwise indicated, trims are for interior use. Also suitable for cold and exterior locations, as in soffits, where fixtures are not subject to direct rain or snow exposure.

WARNING – This option is not suitable for salt environments and/or highly corrosive areas such as soffits in coastal regions and natatoriums. Such usage would void warranty on the product.

REMODEL HOUSING CODIFICATION EXAMPLE



ORDERING CODES for remodel housing

HOUSING TYPE	SERIES MODEL	VOLTAGE	DRIVER	POWER
RE	HEX			
RE	HEX HexaLED	1 120V	D1 ELV**	P1 20W
		2 277V	D2 0-10V (Sinking Control)	P2 30W
			D3 Lutron Hi-Lume « A-Series », Eco System/ 3-wires (CCR)	P3 40W

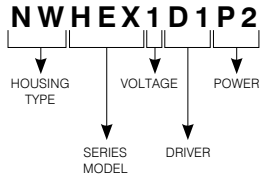
** (Only for P1 and P2, not available on P3)



HexaLED

6" Series

NEW CONSTRUCTION HOUSING CODIFICATION EXAMPLE

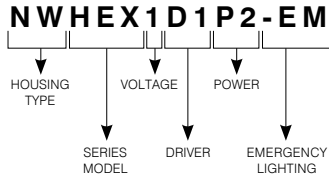


ORDERING CODES for new construction housing

HOUSING TYPE	SERIES MODEL	VOLTAGE	DRIVER	POWER	REVISION
NW	HEX				
NW	HEX HexaLED	1 120V	D1 ELV**	P1 20W	-R1 1D1P1 Only
		2 277V	D2 0-10V (Sinking Control)	P2 30W	
			D3 Lutron Hi-Lume « A-Series », Eco System/ 3-wires (CCR)	P3 40W	

** (Only for P1 and P2, not available on P3)

NEW CONSTRUCTION HOUSING WITH EMERGENCY LIGHTING CODIFICATION EXAMPLE



ORDERING CODES for new construction housing with emergency lighting

HOUSING TYPE	SERIES MODEL	VOLTAGE	DRIVER	POWER	EMERGENCY LIGHTING	REVISION
NW	HEX				-EM	
NW	HEX HexaLED	1 120V	D1 ELV**	P1 20W	-EM Emergency Lighting	-R1 1D1P1 Only
		2 277V	D2 0-10V (Sinking Control)	P2 30W		
			D3 Lutron Hi-Lume « A-Series », Eco System/ 3-wires (CCR)	P3 40W		

** (Only for P1 and P2, not available on P3)

