

# ISUR3

## 3-1/2" URBAĪ Series

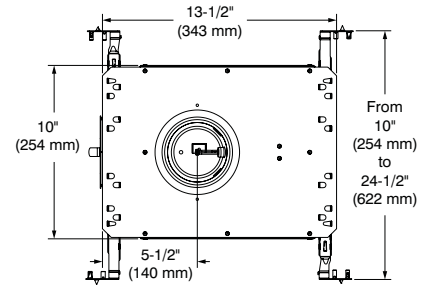
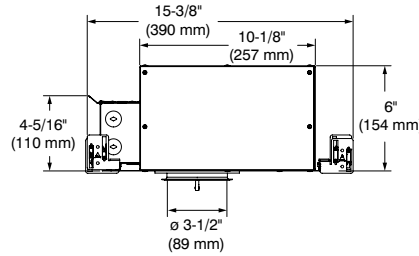
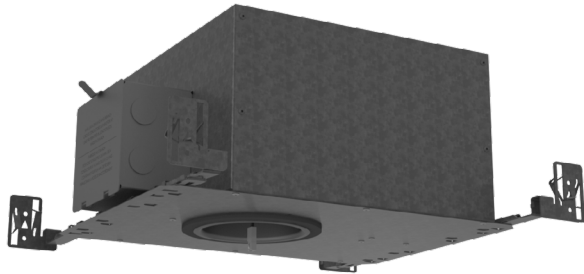
### Classic IC and Air Tight New Construction Housing

Project \_\_\_\_\_

Notes \_\_\_\_\_

Fixture Type \_\_\_\_\_

Date \_\_\_\_\_



## SPECIFICATIONS

### HOUSING DETAILS

Up to 0,051" (1,3 mm) thick galvanized steel housing with integrated "IC" box.  
 Approved for installation in insulated ceilings and in direct contact with insulating material (except polyurethane).  
**Conformity option for direct contact with polyurethane** in performance 1 only (P option).  
 33-1/2 in<sup>3</sup> junction box.  
 Below-ceiling accessible.

### MOUNTING

**Cutout diameter: ø 3-5/8" (92 mm)**  
 Can fit ceilings up to 2" (51 mm) thick.  
 Requires a 6" (152 mm) clearance beyond the ceiling material.  
 Snap-in hooks for ease of installation and a perfect fit to ceiling.  
 Mounting bars extend from 10" (254 mm) to 24-1/2" (622 mm) to fit in most ceilings.  
 No light leakage.

### PERFORMANCE

**1: 10W IC**  
 up to 1,018 lm

**2: 15W IC**  
 up to 1,326 lm  
 Warm Dimming (WD)  
 up to 650 lm

### VOLTAGE

120 Volts  
 277 Volts  
 120 / 277 Volts (Universal)

### DIMMING

ELV: 120V only  
 0-10V: Sourcing driver (Sinking Control)  
 120V or 277V

We invite you to consult frequently our Website to find our suggested compatible dimmers list:  
[www.contrastlighting.com](http://www.contrastlighting.com)

### COMPATIBLE TRIMS

**JAB LISTED JAB8 CERTIFIED (CEC)**  
 UR3A, UR3B, UR3C, UR3E,  
 UR3D, UR3F, UR3G, UR3J

### CERTIFICATION

- cULus **E343977** for damp locations; wet with shower trim only.
- Chicago City code compliance option available (Chicago Plenum (P option)).
- Air Tight tested in accordance with ASTM E283
- CALIFORNIA TITLE 24 (JA8-2016)

### WARRANTY

1 year on components against manufacturing defects.  
 5 years on LED arrays and drivers.

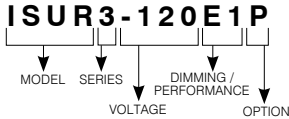
# ISUR3

## 3-1/2" URBAĪ Series

### Classic IC and Air Tight New Construction Housing



CODIFICATION EXAMPLE FOR 120V



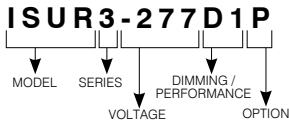
ORDERING CODES for 120V

MODEL	SERIES	VOLTAGE	DIMMING / PERFORMANCE	OPTION
<b>ISUR</b>	<b>3</b>	<b>-120</b>		
<b>ISUR</b> Classic IC and Air Tight New Construction	<b>3</b> 3-1/2" Series	<b>-120</b> 120V	<b>E1</b> ELV / 10W <b>E2</b> ELV / 15W <b>EB2</b> ELV (+Value) / 15W <b>D1</b> 0-10V / 10W <b>D2</b> 0-10V / 15W	<b>P*</b> Chicago Plenum and Polyurethane

Contraste suggests ordering **EB2 (ELV (+Value)/15W)** or **D2 (0-10V/15W)** dimming type and performance to use with Warm Dimming

\* Chicago Plenum / Polyurethane with performance 1 (E1P and D1P)  
Chicago Plenum only with Performance 2 (E2P, EB2P and D2P)

CODIFICATION EXAMPLE FOR 277V



ORDERING CODES for 277V

MODEL	SERIES	VOLTAGE	DIMMING / PERFORMANCE	OPTION
<b>ISUR</b>	<b>3</b>	<b>-277</b>		
<b>ISUR</b> Classic IC and Air Tight New Construction	<b>3</b> 3-1/2" Series	<b>-277</b> 277V	<b>D1</b> 0-10V / 10W <b>D2</b> 0-10V / 15W <b>2</b> Non-Dimmable / 15W	<b>P*</b> Chicago Plenum and Polyurethane

Contraste suggests ordering **D2 (0-10V/15W)** dimming type and performance to use with Warm Dimming

\* Chicago Plenum / Polyurethane with performance 1 (D1P)  
Chicago Plenum only with Performance 2 (D2P and 2P)

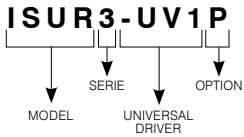
# ISUR3

## 3-1/2" URBAĪ Series

### Classic IC and Air Tight New Construction Housing



#### UNIVERSAL HOUSING CODIFICATION EXAMPLE



#### ORDERING CODES for Universal Housing

MODEL	SERIE	UNIVERSAL DRIVER	OPTION
<b>ISUR</b>	<b>3</b>		
<b>ISUR</b> Classic IC and Air Tight New Construction	<b>3</b> 3-1/2" Series	<b>-UV1 Performance 1</b> ELV (120V) 10W 0-10V (120V) 10W 0-10V (277V) 10W	<b>P*</b> Chicago Plenum and Polyurethane
		<b>-UV2 Performance 2</b> ELV (120V) 15W 0-10V (120V) 15W 0-10V (277V) 15W	<b>* Chicago Plenum / Polyurethane with performance 1 (UV1P)</b> <b>Chicago Plenum only with Performance 2 (UV2P)</b>

Contraste suggests ordering **UV2 (ELV/0-10V/15W)** dimming type and performance to use with Warm Dimming

#### GOOF RINGS

Goof rings will help you fix larger than necessary or damaged ceiling cutouts.

For round trims.

- Code: RR3-01** (White)  
**RR3-03SA** (Satin Gold)  
**RR3-04BR** (Brushed Chrome)  
**RR3-11** (Matte White)  
**RR3-12BR** (Brushed Nickel)  
**RR3-13** (Satin Nickel)  
**RR3-22** (Matte Black)  
**RR3-25** (Polar Grey)

Outside diameter: ø 6-1/8" (156 mm)  
 Inside diameter: ø 3-11/16" (94 mm)

For square trims.

- Code: RS3-01** (White)  
**RS3-03SA** (Satin Gold)  
**RS3-04BR** (Brushed Chrome)  
**RS3-11** (Matte White)  
**RS3-12BR** (Brushed Nickel)  
**RS3-13** (Satin Nickel)  
**RS3-22** (Matte Black)  
**RS3-25** (Polar Grey)

Outside dimensions: 5" (127 mm) x 5" (127 mm)  
 Inside diameter: ø 3-11/16" (94 mm)

#### OPENING ADAPTOR

For round trims only.  
 Can lip adaptor for 3-1/2" (89 mm) pot in a 4-1/4" (108 mm) opening.

**Finish:** Galvanized steel

**Code: 312296**

Outside diameter: ø 4-5/16" (110 mm)  
 Inside diameter: ø 3-5/8" (92 mm)