

## SPECIFICATION SHEET

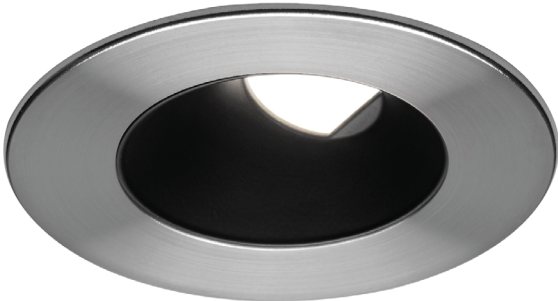
**UR3G****3-1/2" Series****Round Wall Wash Trim**

Project \_\_\_\_\_

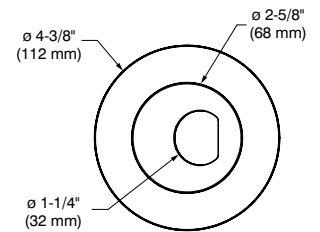
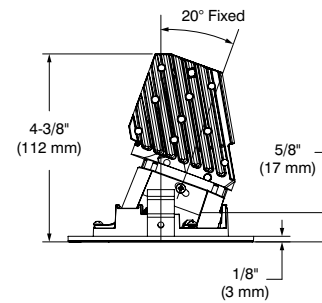
Notes \_\_\_\_\_

Fixture Type \_\_\_\_\_

Date \_\_\_\_\_



UR3GF-12BR22 (illustrated)



## SPECIFICATIONS

## LED MODULE

**STANDARD (SOLID WHITE)**

Lumileds Luxeon CoB 1203 GEN4

 $L_{70}$  @ 50,000 hours of operation. 3-Step MacAdam ellipse (3 SDCM)

Color temperatures: 2,700K - 3,000K - 3,500K - 4,000K

CRI: 80+ (only 2,700K and 3,000K), 90+

Delivered Lumens: Performance 1 (10W) - 557 lumens @ 3,000K, 56 lm/W  
 Performance 2 (15W) - 726 lumens @ 3,000K, 48 lm/W  
 Performance 3 (24W) - 1,089 lumens @ 3,000K, 45 lm/W

Power supply (*determined by the choice of housing*): 120V, 277V or 120V/277V

Several driver models available in three performances (10W, 15W and 24W) offered in two dimming options:

ELV: 120V only 0-10V: 120V / 277V

Consult housing specification sheet for more details.

**WARM DIMMING (WD)**

LTF LED Module mimicking the halogen lamp dimming conditions by lowering color temperature from 3,050K at full intensity down to 1,800K at low-end while ensuring 90+ CRI throughout the whole process.

 $L_{70}$  @ 50,000 hours of operation. 3-Step MacAdam ellipse (3 SDCM)

Color Temperature: 3,050K to 1,800K

CRI: 90+ (over the entire dimming range)

Delivered Lumens: Performance 1 (10W) - up to 325 lumens  
 Performance 2 (15W) - up to 425 lumens  
 Performance 3 (24W) - up to 625 lumens

Power supply (*determined by the choice of housing*): 120V, 277V or 120V/277V

Several driver models available in three performances (10W, 15W and 24W) offered in two dimming options:

ELV: 120V only 0-10V: 120V / 277V

Consult housing specification sheet for more details.

## CEILING CUTOUT

**ø 3-3/4" (95 mm)**

## ADJUSTABILITY

20° fixed tilt

## CERTIFICATION

cULus **E343977** for damp locations

## WARRANTY

1 year limited warranty on components against manufacturing defects  
 5-year limited warranty on LED arrays and drivers

**CONTRASTE**2020-10  
Revision 6

PRINTED IN CANADA

1009, rue du Parc Industriel  
 Lévis (Québec) G6Z 1C5 Canada  
 Tel.: 1-888-839-4624  
 Fax.: 1-877-839-7057  
 contrastlighting.com  
 info@contrastlighting.com

© 2020 Contrast Lighting M.L. Inc.  
 All rights reserved

Contrast Lighting M.L. Inc. reserves the right to make changes in specifications and/or to discontinue any product at any time without notice or obligation and will not be liable for any consequences resulting from the use of this publication.

# UR3G

3-1/2" Series

## Round Wall Wash Trim



### SPECIFICATIONS (CONT'D)

#### COMPATIBLE HOUSINGS

	Remodel Housings	New Construction Housings	IC Housings
<p><b>Performance 1</b> 10W</p> <p>Warm Dimming not compatible</p>	<p><b>IC Air Tight</b> REUR3-120D1 REUR3-120E1 REUR3-277D1 REUR3-UV1</p>	<p><b>IC Air Tight</b> NWUR3-120D1 NWUR3-120E1 NWUR3-277D1 NWUR3-UV1</p> <p><b>Non-IC Air Tight Emergency Driver</b> NWUR3-120D1-EM NWUR3-120E1-EM NWUR3-277D1-EM NWUR3-UV1-EM</p>	<p><b>IC Air Tight</b> ISUR3-120D1 ISUR3-120E1 ISUR3-277D1 ISUR3-UV1</p> <p><b>IC Air Tight Chicago Plenum and Polyurethane</b> ISUR3-120D1P ISUR3-120E1P ISUR3-277D1P ISUR3-UV1P</p>
<p><b>Performance 2</b> 15W MAX</p>	<p><b>Non-IC Air Tight</b> REUR3-120D2 REUR3-120E2 REUR3-120EB2 REUR3-2772 REUR3-277D2 REUR3-UV2</p>	<p><b>Non-IC Air Tight</b> NWUR3-120D2 NWUR3-120E2 NWUR3-120EB2 NWUR3-2772 NWUR3-277D2 NWUR3-UV2</p> <p><b>Non-IC Air Tight Emergency Driver</b> NWUR3-120D2-EM NWUR3-120E2-EM NWUR3-120EB2-EM NWUR3-2772-EM NWUR3-277D2-EM NWUR3-UV2-EM</p>	<p><b>IC Air Tight</b> ISUR3-120D2 ISUR3-120E2 ISUR3-120EB2 ISUR3-2772 ISUR3-277D2 ISUR3-UV2</p> <p><b>IC Air Tight Chicago Plenum</b> ISUR3-120D2P ISUR3-120E2P ISUR3-120EB2P ISUR3-2772P ISUR3-277D2P ISUR3-UV2P</p>
<p><b>Performance 3</b> 24W MAX</p>	N/A	<p><b>Non-IC Non-Air Tight</b> NWUR3-UV3</p> <p><b>Non-IC Non-Air Tight Emergency Driver</b> NWUR3-UV3-EM</p>	N/A

For dimming, please visit our Web site frequently to find our suggested compatible dimmers list:  
[www.contrastlighting.com](http://www.contrastlighting.com)

Contraste suggests ordering  
**EB2 (ELV (+Value)/15W), D2 (0-10V/15W)**  
or  
**UV2 (ELV/0-10V/15W) and UV3 (ELV/0-10V/24W)**  
dimming type and performance to use with Warm Dimming

## SPECIFICATION SHEET

**UR3G**

3-1/2" Series

**Round Wall Wash Trim**

## SPECIFICATIONS (CONT'D)

TRIM	Powder coat painted or plated aluminum injected. <b>Different finishes available:</b> White <b>(-01)</b> , Brushed Chrome <b>(-04BR)</b> , Matte White <b>(-11)</b> , Brushed Nickel <b>(-12BR)</b> , <b>Satin Nickel (-13)</b> , Matte Black <b>(-22)</b> and Polar Grey <b>(-25)</b>				
REFLECTORS	<b>PAINTED</b> Natural Anodized Aluminum <b>(AN)</b> Matte White <b>(11)</b> Matte Black <b>(22)</b> ( <i>suggested for an optimal result</i> )				
HEAT SINK	High quality aluminum injected heat sink ensuring maximum heat dissipation.				
OPTIC SYSTEM	Optical reflector and lens available to customize your lighting. <b>Choice of available lenses:</b> <b>Frosted (F)</b> - for uniform lighting distribution ensuring optimal results. <b>Optical reflectors available:</b> Flood <table border="1" style="margin-left: auto; margin-right: auto;"><thead><tr><th colspan="2" style="text-align: center;">Standard</th></tr></thead><tbody><tr><td style="text-align: center;">Flood <b>(L)</b></td><td style="text-align: center;">65°</td></tr></tbody></table> <b>* Average beams shown. Consult .ies files on our Website for more details.</b>	Standard		Flood <b>(L)</b>	65°
Standard					
Flood <b>(L)</b>	65°				
ACCESSORIES	<ul style="list-style-type: none"> <li>• Goof Rings (see ordering code)</li> <li>• Opening Adaptor (see ordering code)</li> </ul>				

**CONTRASTE**2020-10  
Revision 6

PRINTED IN CANADA

1009, rue du Parc Industriel  
Lévis (Québec) G6Z 1C5 Canada  
Tel.: 1-888-839-4624  
Fax.: 1-877-839-7057  
contrastlighting.com  
info@contrastlighting.com© 2020 Contrast Lighting M.L. Inc.  
All rights reserved

Contrast Lighting M.L. Inc. reserves the right to make changes in specifications and/or to discontinue any product at any time without notice or obligation and will not be liable for any consequences resulting from the use of this publication.

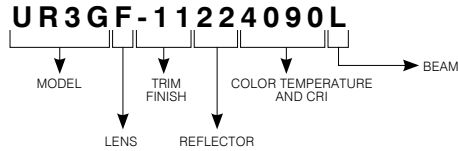
## SPECIFICATION SHEET

**UR3G**

3-1/2" Series

**Round Wall Wash Trim**

## CODIFICATION EXAMPLE



*Options in red may generate a longer production lead time.*

## ORDERING CODES

MODEL	LENS	TRIM FINISHES	REFLECTOR FINISHES	COLOR TEMPERATURE AND CRI	BEAM
<b>UR3G</b>	<b>F</b>				<b>L</b>
<b>UR3G</b>	<b>F</b> Frosted (std)	<b>-01</b> White <b>-04BR</b> Brushed Chrome <b>-11</b> Matte White <b>-12BR</b> Brushed Nickel <b>-22</b> Matte Black <b>-25</b> Polar Grey <b>-13</b> <i>Satin Nickel</i>	<b>PAINTED</b> <b>AN</b> Natural Anodized Aluminum <b>11</b> Matte White <b>22</b> Matte Black <i>(suggested for an optimal result)</i>	<b>2780</b> 2,700K (80+ CRI) <b>3080</b> 3,000K (80+ CRI) <b>2790</b> 2,700K (90+ CRI) <b>3090</b> 3,000K (90+ CRI) <b>3590</b> 3,500K (90+ CRI) <b>4090</b> 4,000K (90+ CRI) <b>WD90</b> Warm Dimming 3,050K to 1,800K (90+ CRI)	<b>L</b> Flood (65°)
		<i>(-25 finish perfectly matches with AN reflector)</i>		<i>Compatible with 15W and 24W drivers only            (EB2, D2, UV2 and UV3)</i>	

## GOOF RINGS

Goof rings will help you fix larger than necessary or damaged ceiling cutouts.

**Code: RR3-01** (white)  
**RR3-04BR** (brushed chrome)  
**RR3-11** (matte white)  
**RR3-12BR** (brushed nickel)  
**RR3-13** (satin nickel)  
**RR3-22** (matte black)  
**RR3-25** (polar grey)

Outside diameter:  $\varnothing$  6-1/8" (156 mm)  
 Inside diameter:  $\varnothing$  3-11/16" (94 mm)

## OPENING ADAPTOR

Can lip adaptor for 3-1/2" (89 mm) pot in 4-1/4" (108 mm) opening.

**Finish:** Galvanized steel

**Code: 312296**

Outside diameter:  $\varnothing$  4-5/16" (110 mm)  
 Inside diameter:  $\varnothing$  3-5/8" (92 mm)

**CONTRASTE**2020-10  
Revision 6

PRINTED IN CANADA

1009, rue du Parc Industriel  
 Lévis (Québec) G6Z 1C5 Canada  
 Tel.: 1-888-839-4624  
 Fax.: 1-877-839-7057  
 contrastlighting.com  
 info@contrastlighting.com

© 2020 Contrast Lighting M.L. Inc.  
 All rights reserved

Contrast Lighting M.L. Inc. reserves the right to make changes in specifications and/or to discontinue any product at any time without notice or obligation and will not be liable for any consequences resulting from the use of this publication.

# UR3G

## 3-1/2" Series

### Round Wall Wash Trim

### PHOTOMETRIC DATA



In order to obtain the accurate photometric data, multiply the lumens relative to your product selection by the applicable factor(s). Take note these factors also need to be implemented in the .ies files available on our website.

#### WITH PERFORMANCE 1 HOUSING (10W)

	Flood (65°)	
<b>2,700K with 80+ CRI</b>	544 lm	54 lm/W
<b>3,000K with 80+ CRI</b>	557 lm	56 lm/W

<b>2,700K with 90+ CRI</b>	452 lm	45 lm/W
<b>3,000K with 90+ CRI</b>	467 lm	47 lm/W
<b>3,500K with 90+ CRI</b>	492 lm	49 lm/W
<b>4,000K with 90+ CRI</b>	507 lm	51 lm/W
<b>Warm Dimming with 90+ CRI</b>	325 lm	32.5 lm/W

Performance 1 Housings Factors	
<b>XXUR-120E1</b>	0.90
<b>XXUR-120D1 or XXUR-277D1</b>	1

Reflector Factors			
<b>11</b>	1	<b>AN</b>	0.99
<b>22</b>	0.97		

#### WITH PERFORMANCE 2 HOUSING (15W)

	Flood (65°)	
<b>2,700K with 80+ CRI</b>	708 lm	47 lm/W
<b>3,000K with 80+ CRI</b>	726 lm	48 lm/W

<b>2,700K with 90+ CRI</b>	589 lm	39 lm/W
<b>3,000K with 90+ CRI</b>	608 lm	41 lm/W
<b>3,500K with 90+ CRI</b>	642 lm	43 lm/W
<b>4,000K with 90+ CRI</b>	659 lm	44 lm/W
<b>Warm Dimming with 90+ CRI</b>	425 lm	28 lm/W

Performance 2 Housings Factors	
<b>XXUR-120E2</b>	0.95
<b>XXUR-120EB2, XXUR-120D2, XXUR-2772 or XXUR-277D2</b>	1

Reflector Factors			
<b>11</b>	1	<b>AN</b>	0.99
<b>22</b>	0.97		

# CONTRASTE

# UR3G

3-1/2" Series

## Round Wall Wash Trim

## PHOTOMETRIC DATA



WITH PERFORMANCE 3 HOUSING (24W)

	Flood (65°)	
2,700K with 80+ CRI	1,063 lm	44 lm/W
3,000K with 80+ CRI	1,089 lm	45 lm/W

2,700K with 90+ CRI	883 lm	37 lm/W
3,000K with 90+ CRI	912 lm	38 lm/W
3,500K with 90+ CRI	962 lm	40 lm/W
4,000K with 90+ CRI	976 lm	41 lm/W
Warm Dimming with 90+ CRI	625 lm	26 lm/W

Reflector Factors			
11	1	AN	0.99
22	0.97		

# UR3G

3-1/2" Series

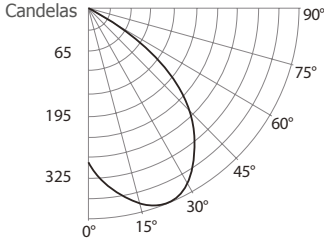
## Round Wall Wash Trim

## PHOTOMETRIC DATA



### 3,000K, 90+ CRI, Flood, Performance 1

#### CANDLEPOWER DISTRIBUTION



#### LIGHT CONE

Distance	FC	DIA
06'	7.7	7.6'
08'	4.4	10.1'
10'	2.8	12.7'
12'	1.9	15.2'
14'	1.4	17.8'
16'	1.1	20.3'

Beam: 64.8°  
Beam Edge defined as 50% of Maximum Nadir Candle-power.

#### LUMINAIRE

Performance 1 LED	3,000K Flood	
CBCP / Lumens	279	/ 467.7
Watts	120V	277V
	10W	10.5W
Operating AMPS	0.08A	0.038A
Lumen Maintenance	L70 @ 50,000 Hrs	
CRI	90+	
Lumens/Watt	46.7	
Spacing Criteria	1.66	

#### COEFFICIENT OF UTILIZATION - %

Ceiling Reflect %	80		50		30		
Wall Reflect %	50	30	50	30	50	30	
RCR	0	119	119	111	111	106	106
	2	98	93	93	89	90	86
	4	80	73	77	71	75	70
	6	67	59	64	58	63	57
	8	57	49	55	48	54	48
	10	49	42	47	41	47	41

Zonal Cavity Method  
Effective Floor Cavity Reflectance 20%

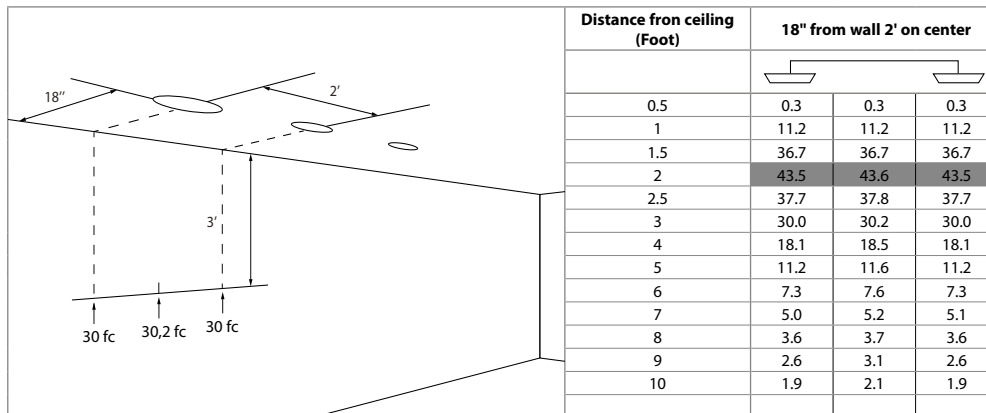
#### ZONAL LUMEN SUMMARY

ZONE	LUMENS	%LUMINAIRE
0-30	199.1	42.6%
0-40	306.9	65.6%
0-60	445.1	95.2%
60-90	22.6	4.8%
0-90	467.7	100%

#### CANDELAS DISTRIBUTION

DEGREES/ VERTICAL	CANDELAS
0	279
5	363
10	359
15	248
20	68
25	4
30	0

#### Footcandles On Wall - Performance 1



Note: Footcandles Data

# UR3G

3-1/2" Series

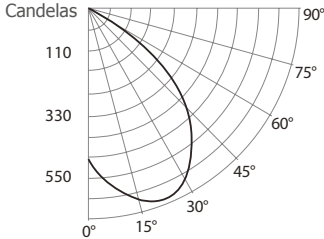
## Round Wall Wash Trim

## PHOTOMETRIC DATA



### 3,000K, 90+ CRI, Flood, Performance 2

#### CANDLEPOWER DISTRIBUTION



#### LIGHT CONE

Distance	FC	DIA
06'	13.1	7.6'
08'	7.4	10.1'
10'	4.7	12.7'
12'	3.3	15.2'
14'	2.4	17.7'
16'	1.9	20.3'

Beam: 64.7°  
Beam Edge defined as 50% of Maximum Nadir Candle-power.

#### LUMINAIRE

Performance 2 LED	3,000K Flood	
CBCP / Lumens	473	/ 794.1
Watts	120V	277V
	15W	15.5W
Operating AMPS	0.12A	0.055A
Lumen Maintenance	L70 @ 50,000 Hrs	
CRI	90+	
Lumens/Watt	52.9	
Spacing Criteria	1.66	

#### COEFFICIENT OF UTILIZATION - %

Ceiling Reflect %	80		50		30		
Wall Reflect %	50	30	50	30	50	30	
RCR	0	119	119	111	111	106	106
	2	98	93	93	89	90	86
	4	80	73	77	71	75	70
	6	67	59	64	58	63	57
	8	57	49	55	48	54	48
	10	49	42	47	41	47	41

Zonal Cavity Method  
Effective Floor Cavity Reflectance 20%

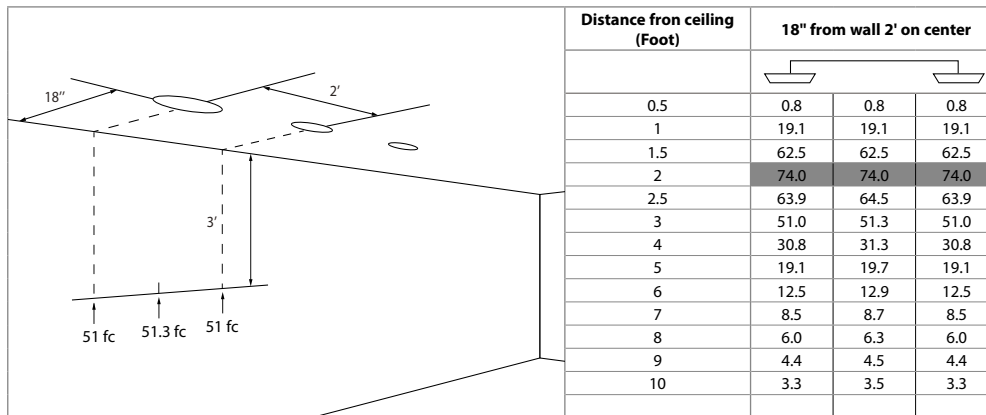
#### ZONAL LUMEN SUMMARY

ZONE	LUMENS	%LUMINAIRE
0-30	338.0	42.6%
0-40	521.1	65.6%
0-60	755.7	95.2%
60-90	38.4	4.8%
0-90	794.1	100%

#### CANDELAS DISTRIBUTION

DEGREES/ VERTICAL	CANDELAS
0	473
5	617
10	608
15	421
20	116
25	6
30	0

#### Footcandles On Wall - Performance 2



Note: Footcandles Data



# UR3G

3-1/2" Series

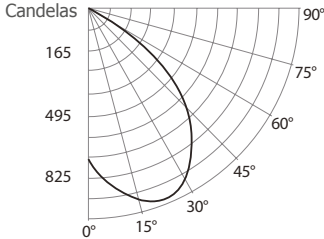
## Round Wall Wash Trim

## PHOTOMETRIC DATA



### 3,000K, 90+ CRI, Flood, Performance 3

#### CANDLEPOWER DISTRIBUTION



#### LIGHT CONE

Distance	FC	DIA
06'	19.7	7.6'
08'	11.1	10.1'
10'	7.1	12.7'
12'	4.9	15.2'
14'	3.6	17.7'
16'	2.8	20.3'

Beam: 64.7°  
Beam Edge defined as 50% of Maximum Nadir Candle-power.

#### LUMINAIRE

Performance 3 LED	3,000K Flood	
CBCP / Lumens	710	/ 1,191.1
Watts	120V	277V
	24W	24.5W
Operating AMPS	0.20A	0.088A
Lumen Maintenance	L70 @ 50,000 Hrs	
CRI	90+	
Lumens/Watt	49.6	
Spacing Criteria	1.66	

#### COEFFICIENT OF UTILIZATION - %

Ceiling Reflect %	80		50		30		
Wall Reflect %	50	30	50	30	50	30	
RCR	0	119	119	111	111	106	106
	2	98	93	93	89	90	86
	4	80	73	77	71	75	70
	6	67	59	64	58	63	57
	8	57	49	55	48	54	48
	10	49	42	47	41	47	41

Zonal Cavity Method  
Effective Floor Cavity Reflectance 20%

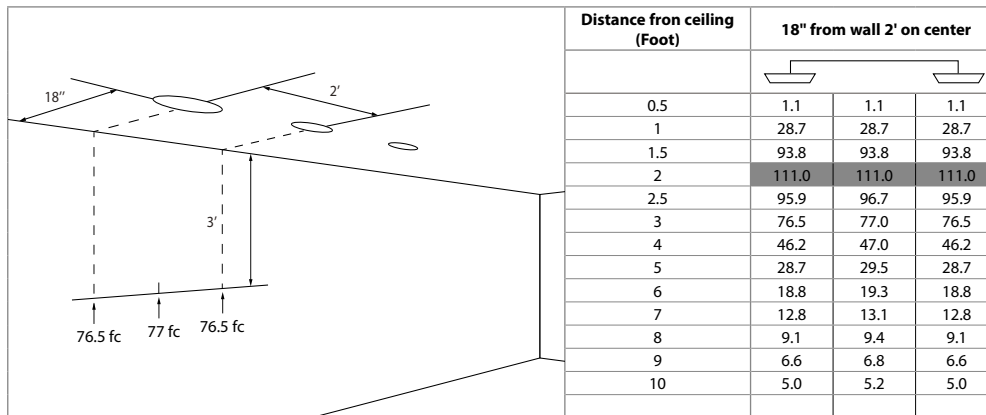
#### ZONAL LUMEN SUMMARY

ZONE	LUMENS	%LUMINAIRE
0-30	507.0	42.6%
0-40	781.6	65.6%
0-60	1,133.5	95.2%
60-90	57.6	4.8%
0-90	1,191.1	100%

#### CANDELAS DISTRIBUTION

DEGREES/ VERTICAL	CANDELAS
0	710
5	925
10	912
15	632
20	173
25	10
30	0

#### Footcandles On Wall - Performance 3



Note: Footcandles Data